

LED Luminaires

LANDSCAPE
LIGHTING



Contents

INDEX	05
-------	----

MAS Product

OUTDOOR

01. SOLAR

LANDSCAPE LIGHTING 태양광 경관 조명	15
------------------------------	----

Solar Wall Light 태양광 보안등

02. LANDSCAPE LIGHTING 경관 조명	21
------------------------------	----

Flood Light 투광등

Wall Light 벽등

Gobo Light 고보 조명

Bar Light 바 조명

Inground Light 매입등

Beacon Bollards Light 블라드

Pole Light 폴 조명

Column Light 열주등

Flower Light 꽃 조명

Shape Light 형상 조명

HYUNDA ENG



Designing and producing lighting systems
using LED technology is our speciality.

We are proud to be an authentic example, established in 2003,
of the Made in Korea branding,
with a flair for innovation and a profound appreciation of luminaire projects.

All our products are designed at our headquarters in Sejong-si,
where our meticulous creative process guarantees
the highest possible quality and the greatest, long-lasting reliability.

HYUNDA ENG



현대엔지니어링은 LED 기술의 조명 시스템 설계 및 생산 전문 기업입니다.

2003년에 설립된 Made in Korea 브랜딩의 진정한 사례로서
혁신에 대한 재능과 조명 프로젝트에 대한 깊은 이해를 가지고 있음을 자랑스럽게 생각합니다.

현대엔지니어링의 모든 제품은 세종시에 있는 본사에서 설계되었으며,
당사의 꼼꼼한 창의적 공정이 최고의 품질과 최고의 지속적 신뢰성을 보장합니다.

INDEX

OUTDOOR_ SOLAR LANDSCAPE LIGHTING [MAS Product]

Solar Wall Light

태양광 보안등



HDSS-08
8W
MONO COLOR
P.19



HDSS-12B
12W
MONO COLOR
P.19



HDSS-15B
15W
MONO COLOR
P.20

OUTDOOR_LANDSCAPE LIGHTING [MAS Product]

Floodlight

투광등



HD-0004
30W
MONO&RGB COLOR
P.23



HD-0003
36W
MONO&RGB COLOR
P.23



HD-000S
36W
MONO&RGB COLOR
P.24



HD-00A
40W
MONO&RGB COLOR
P.24



HD-00AN
70W
MONO&RGB COLOR
P.25



HD-LFC36-0165
36W
MONO COLOR
P.25



HD-LFC72N
72W
MONO&RGB COLOR
P.26



HD-LPCF-15A
15W
MONO&RGB COLOR
P.26



HD-LPCF-35.5
35.5W
MONO&RGB COLOR
P.27



HD-LPCF-100A
100W
MONO&RGB COLOR
P.27



HD-LPCF-150U
150W
MONO&RGB COLOR
P.28



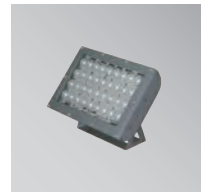
HD-LPCF-200U
200W
MONO&RGB COLOR
P.28



HD-LPSF-108A
108W
MONO&RGB COLOR
P.29



HD-LPSF-200
200W
MONO&RGB COLOR
P.29



HD-LPF-PQ72
72W
MONO&RGB COLOR
P.30



HDFL-210B
48W
MONO&RGB COLOR
P.30



HDFL-76
8W
MONO&RGB COLOR
P.31



HDFL-1015B
96W
MONO&RGB COLOR
P.31



HD-LPLF-36
36W
MONO&RGB COLOR
P.32



HD-LPLF-54
54W
MONO&RGB COLOR
P.32



HD-LPLF-72
72W
MONO&RGB COLOR
P.32

OUTDOOR_LANDSCAPE LIGHTING [MAS Product]

Wall Light

벽부등



HD-0520L
24W
MONO COLOR
P.33



HD-0530L
24W*2
MONO COLOR
P.33



HD-0016
15W
MONO COLOR
P.34

Gobo Light

고보 조명



HD-T-4
40W
RGB COLOR
P.34



HD-T-8
80W
RGB COLOR
P.35



HD-T-10
100W
RGB COLOR
P.35



HD-T-20
200W
RGB COLOR
P.36



HD-T-30
300W
RGB COLOR
P.36



HD-4T-8
80W
RGB COLOR
P.37



HD-4T-10
100W
RGB COLOR
P.37



HD-4T-20
200W
RGB COLOR
P.38



HD-4T-30
300W
RGB COLOR
P.38

Bar Light

바 조명



HD-LPOS-6
6W
MONO&RGB COLOR
P.39



HD-LPOS-08
11.5W
MONO&RGB COLOR
P.39



HD-LPOS-10
14.4W
MONO&RGB COLOR
P.40



HD-LPOS-10N
15W
MONO&RGB COLOR
P.40



HD-LPOS-22
22W
MONO&RGB COLOR
P.41



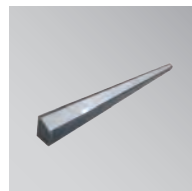
HD-LPOS-15
15W
MONO&RGB COLOR
P.41



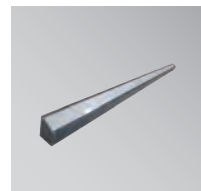
HD-LPOS-24
24W
MONO&RGB COLOR
P.42



HD-LPUV-15
15W
UV Lamp
P.42



HD-LPSD-15T
15W
MONO&RGB COLOR
P.43



HD-LPSD-30T
30W
MONO&RGB COLOR
P.43

OUTDOOR_LANDSCAPE LIGHTING [MAS Product]

Bar Light

바 조명



HD-LPSD-15F
15W
MONO&RGB COLOR
P.44



HD-LPSD-30F
30W
MONO&RGB COLOR
P.44



HD-LPSH-15S
15W
MONO COLOR
P.45



HD-LPSH-15T
15W
MONO COLOR
P.45



HD-0158
36W
MONO COLOR
P.46



HD-0158-S
18W
MONO COLOR
P.46



HD-LPT15
15W
MONO&RGB COLOR
P.47



HD-LPOM15-56Pixel-A
15W
MONO&RGB COLOR
P.47



HDLS30-LRDB
30W
MONO COLOR
P.48



HDBAR-22
14W
MONO&RGB COLOR
P.48



HDBAR-54
14W
MONO&RGB COLOR
P.49



HDBAR-35
14W
MONO&RGB COLOR
P.49



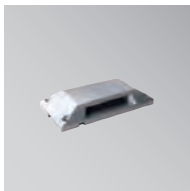
HDFL-1000J
24W
MONO&RGB COLOR
P.50



HDFX-12
15W
MONO&RGB COLOR
P.50

Inground Light

매입등



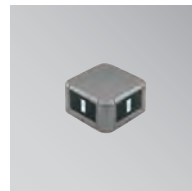
HDK-1D
1.5W
MONO&RGB COLOR
P.51



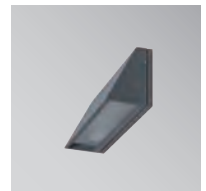
HDK-2D
1.5*2W
MONO&RGB COLOR
P.51



HD-0142
4W
MONO COLOR
P.52



HD-0017
8W
MONO COLOR
P.52



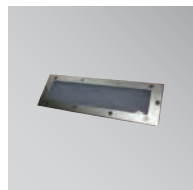
HD-0134
12W
MONO COLOR
P.53



HD-0150
15W
MONO COLOR
P.53



HD-LPQG-6A
6W
MONO&RGB COLOR
P.54



HD-LPQG-9
9W
MONO&RGB COLOR
P.54



HD-LPQG-14
14W
MONO&RGB COLOR
P.55



HD-LPQG-36
36W
MONO&RGB COLOR
P.55

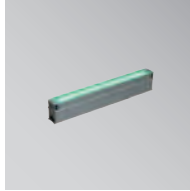
OUTDOOR_LANDSCAPE LIGHTING [MAS Product]

Inground Light

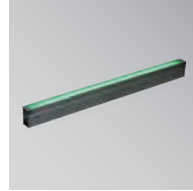
매입등



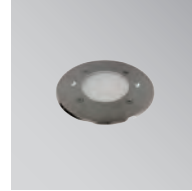
HD-LPST-10
7.5W
MONO&RGB COLOR
P.56



HD-0180
18W
MONO&RGB COLOR
P.56



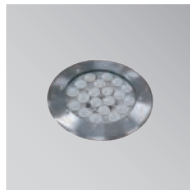
HD-0170
18W
MONO&RGB COLOR
P.57



HD-LPG-SC3A
3W
MONO&RGB COLOR
P.57



HD-LPCG-18A
18W
MONO&RGB COLOR
P.58



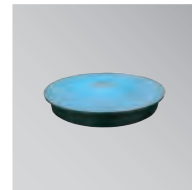
HD-LPG-PC36A
36W
MONO&RGB COLOR
P.58



HD-LPCG-20
20W
MONO&RGB COLOR
P.59



HD-LPCP-C1
1W
MONO&RGB COLOR
P.59



HDUG-400A
20W
MONO&RGB COLOR
P.60

Beacon Bollards Light

볼라드



HDBL-800CA
12W
MONO COLOR
P.60



HDBL-800G
12W
MONO COLOR
P.61



HDBL-800K
28W
MONO COLOR
P.61



HD-0011
15W
MONO COLOR
P.62



HD-0012
15W
MONO COLOR
P.62



HD-0012Q
15W
MONO COLOR
P.63



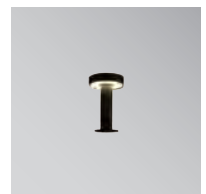
HD-0106
15W
MONO COLOR
P.63



HD-0104
15W
MONO COLOR
P.64



HD-0105
15W
MONO COLOR
P.64



HD-0011S
15W
MONO COLOR
P.65



HD-0012S
15W
MONO COLOR
P.65



HDG-0568
10W
MONO COLOR
P.66



HDG-0586
10W
MONO COLOR
P.66



HDG-0585
10W
MONO COLOR
P.67



HD-LPSC-10U-1
10W
MONO COLOR
P.67

OUTDOOR_LANDSCAPE LIGHTING [MAS Product]

Beacon Bollards Light

볼라드



HD-LPSC-10U-2
10W
MONO COLOR
P.68



HDBL-180
28W
MONO COLOR
P.68



HD-0002J
9W
MONO COLOR
P.69



HD-0002M
10W
MONO COLOR
P.69



HD-0002D
22W
MONO COLOR
P.70

Pole Light

폴 조명



HD-003-108
50W
MONO COLOR
P.70



HD-003-109
50W
MONO COLOR
P.71



HD-003-101
60W
MONO COLOR
P.71



HD-003-102
60W
MONO COLOR
P.72



HD-003-201
50W
MONO COLOR
P.72



HD-003-106
60W
MONO COLOR
P.73



HD-003-107
60W
MONO COLOR
P.73

Column light

열주등



HDC-142-MD
60W
MONO COLOR
P.74



HDC-190-LBR
118W
MONO COLOR
P.74



HDC-140-CSCR-MD
60W
MONO COLOR
P.75



HDC-170-CR
60W
MONO COLOR
P.75



HD-140-X
75W
MONO COLOR
P.76



HDC-141-TY
75W
MONO COLOR
P.76



HDC-STSL-SFR
146W
MONO&RGB COLOR
P.77



HDC-STSL-CC
114W
MONO&RGB COLOR
P.77



HDC-140-SV
125W
MONO COLOR
P.78



HDC-190-UD
140W
MONO&RGB COLOR
P.78

OUTDOOR_LANDSCAPE LIGHTING [MAS Product]

Column light

열주등



HDC-STL-UDB
148W
MONO&RGB COLOR
P.79



HDC-150L-XC
60W
MONO COLOR
P.79



HDC-170-XC
60W
MONO COLOR
P.80



HDC-150L-SVC
80W
MONO COLOR
P.80



HDC-172-CRC
60W
MONO COLOR
P.81



HDC-170-SVC
60W
MONO COLOR
P.81



HDC-148-1XC-FR
90W
MONO&RGB COLOR
P.82



HDC-148-SV-BB
110W
MONO COLOR
P.82



HDC-148-SV-LB
125W
MONO&RGB COLOR
P.83



HDC-150L-YC
80W
MONO COLOR
P.83



HDC-150L-TYC
80W
MONO COLOR
P.84



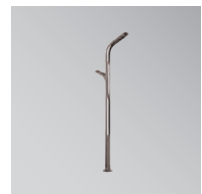
HDC-170-TYC
80W
MONO COLOR
P.84



HDC-140-TYC
100W
MONO COLOR
P.85



HDC-148-2COT-2
80W
MONO COLOR
P.85



HDC-148-3COT-1B
100W
MONO&RGB COLOR
P.86



HDC-148-XC-2
120W
MONO COLOR
P.86



HDC-148-CB
185W
MONO COLOR
P.87



HDC-140-PPC
80W
MONO COLOR
P.87



HDC-149-PPC
100W
MONO COLOR
P.88



HDC-150L-MI
80W
MONO COLOR
P.88



HDC-150-LDB
118W
MONO COLOR
P.89



HDC-133-LBR
150W
MONO COLOR
P.89

OUTDOOR_LANDSCAPE LIGHTING [MAS Product]

Flower Light

꽃 조명



HDFLF-650B
0.3W
MONO&RGB COLOR
P.90



HDFLF-800D
0.3W
MONO&RGB COLOR
P.90



HDFLF-800B
1W
MONO&RGB COLOR
P.91



HDFLF-800C
1W
MONO&RGB COLOR
P.91



HDFLF-650
1W
MONO&RGB COLOR
P.92



HD-GRP0038A
1W
MONO&RGB COLOR
P.92

Shape Light

형상 조명



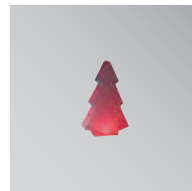
HDBLJ-120
20W
MONO&RGB COLOR
P.93



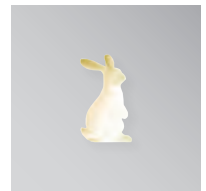
HDBLJ-400
20W
MONO&RGB COLOR
P.93



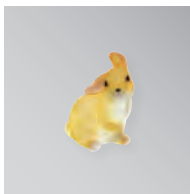
HDBL-400A
20W
MONO&RGB COLOR
P.94



HDBLJ-1100A
50W
MONO&RGB COLOR
P.94



HDBLJ-200A
10W
MONO&RGB COLOR
P.95



HDBLJ-280A
27W
MONO&RGB COLOR
P.95



HDBLJ-530A
10W
MONO&RGB COLOR
P.96



HDBLJ-780
20W
MONO&RGB COLOR
P.96



HDBLJ-800N
3W
MONO&RGB COLOR
P.97



HDBLJ-1200
5W
MONO&RGB COLOR
P.97



HDBLJ-1500
10W
MONO&RGB COLOR
P.97



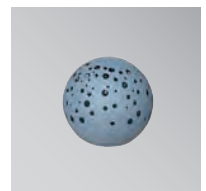
HDBLJ-500A
40W
MONO&RGB COLOR
P.98



HDBLJ-600A
50W
MONO&RGB COLOR
P.98



HDBLJ-800A
70W
MONO&RGB COLOR
P.98



HDBL-600
50W
MONO&RGB COLOR
P.99

OUTDOOR_LANDSCAPE LIGHTING [MAS Product]

Shape light

형상 조명



HDBLJ-1800A
50W
MONO&RGB COLOR
P.99



HDBLP-2560A
180W
MONO&RGB COLOR
P.100



HDBLB-2300A
48W
MONO&RGB COLOR
P.100



HD-2S49
5W
MONO&RGB COLOR
P.101



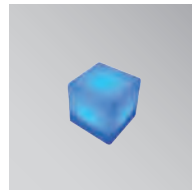
HD-2S50
5W
MONO&RGB COLOR
P.101



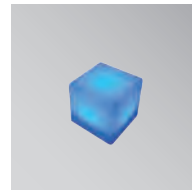
HD-2S51
8W
MONO&RGB COLOR
P.101



HD-2S54
10W
MONO&RGB COLOR
P.101



HD-2S56
5W
MONO&RGB COLOR
P.102



HD-2S58
8W
MONO&RGB COLOR
P.102



HD-2S89
5W
MONO&RGB COLOR
P.103



HD-2S90
5W
MONO&RGB COLOR
P.103



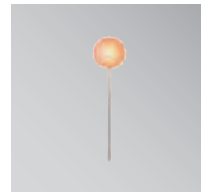
HD-2S91
5W
MONO&RGB COLOR
P.103



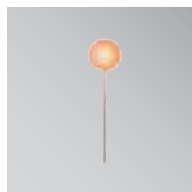
HD-2S92
24W
MONO COLOR
P.104



HD-2S93
24W
MONO COLOR
P.104



HD-S27-1
56W
MONO&RGB COLOR
P.105



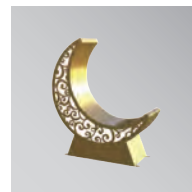
HD-S27-2
100W
MONO&RGB COLOR
P.105



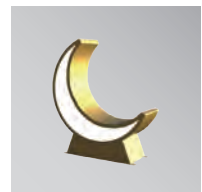
HD-2S01
60W
MONO COLOR
P.106



HD-2S03
60W
MONO COLOR
P.106



HD-2S71
100W
MONO COLOR
P.107



HD-2S72
100W
MONO COLOR
P.107



HD-2S73
100W
MONO COLOR
P.107



HD-2S85
100W
MONO COLOR
P.108



HD-2S87
36W
MONO&RGB COLOR
P.108



HD-T07
295W
MONO COLOR
P.109



HD-T08
135W
MONO COLOR
P.109

OUTDOOR_LANDSCAPE LIGHTING [MAS Product]

Shape light

형상 조명



HD-T09
125W
MONO COLOR
P.110



HD-T11
45W
MONO COLOR
P.110

01

MAS 제품

OUTDOOR

SOLAR LANDSCAPE LIGHTING

Solar Wall Light

Solar Wall Light



태양광 보안등

Led 태양광 보안등이란?

경제적 · 친환경 태양광 충전 에너지 태양광 보안등으로 낮에는 태양광을 공급받아 충전 후 광 점멸센서로 야간에 자동으로 조명이 켜지는 충전식 조명으로, 좁은 골목 등 등기구를 설치하기 어려운 장소, 거리, 야외 등 다양한 곳에 사용 가능합니다.

태양광 충전

낮에는 태양광으로 자동 충전되며 광 점멸센서가 빛의 양에 반응하여 밤이 되면 자동으로 점등, 낮에는 자동 소등 됩니다. 1일 8시간 완충 시 3일간 사용 가능, 점등 시간은 일조량과 날씨에 따라 달라질 수 있습니다.

간편한 설치

별도의 전기 시설이나 배선이 필요 없어 쉽고 빠른 설치와 이동이 간편합니다.

IP65방수 제품

IP65 등급으로 생활 방수 · 방진 기능이 있습니다.

슬림, 컴팩트한 외형

슬림형 축전지 사용으로 깔끔하고 컴팩트한 외형을 구현합니다.

고휘도 LED칩

고휘도 LED칩으로 밝고 선명한 빛을 내어 줍니다.

Solar Wall Light



Dimming System

Led 태양광 보안등의 특징점



리튬 이온 배터리 VS 리튬 이온 폴리머 배터리 특징점

	타사 리튬 이온 배터리	현대엔지니어링 리튬 이온 폴리머 배터리
음극	탄소	탄소
양극	LiCoO ₂ , LiNiO ₂ , LiMn ₂ O ₄ 등 금속산화물	LiCoO ₂ , LiNiO ₂ , LiMn ₂ O ₄ 등 금속산화물
전해질	액체	Polymer(고분자)
전압	3.7 V	3.7 V
에너지 밀도	높다	높다
라이프 사이클	중다	매우 중다
저온특성	보통	중다
안전성	나쁨	중다
셀 디자인 특성	나쁨	매우 중다

현대엔지니어링 태양광 보안등의 특징점

타사의 태양광 보안등의 배터리와는 다른 "리튬 이온 폴리머 배터리" 적용으로 고분자 전해질이 사용되어 **안전성이 높아졌으며 폭발 위험이 매우 적습니다.**

Solar Wall Light

태양광 보안등

Installation Case
HDSS-8B



View



Specification

모델명	HDSS-8B
소비전력	8W
Material	ABS
Cover	PMMA
SIZE(mm)	213x179xH112
식별번호	24891547
단가	220,000
IP/색온도	IP 65 MONO COLOR

Installation Case
HDSS-12B



Specification

모델명	HDSS-12B
소비전력	12W
Material	ABS
Cover	PMMA
SIZE(mm)	253x123xH148
식별번호	24891548
단가	242,000
IP/색온도	IP 65 MONO COLOR

Solar Wall Light

태양광 보안등

Installation Case

HDSS-15B



View



Specification

모델명	HDSS-15B
소비전력	15W
Material	ABS
Cover	PMMA
SIZE(mm)	365x205xH117
식별번호	24891549
단가	275,000
IP/색온도	<div>IP 65</div> <div>MONO COLOR</div>

02

MAS 제품

OUTDOOR

LANDSCAPE LIGHTING

Flood Light

Wall Light

Gobo Light

Bar Light

Inground Light

Beacon Bollards Light

Pole Light

Column Light

Flower Light

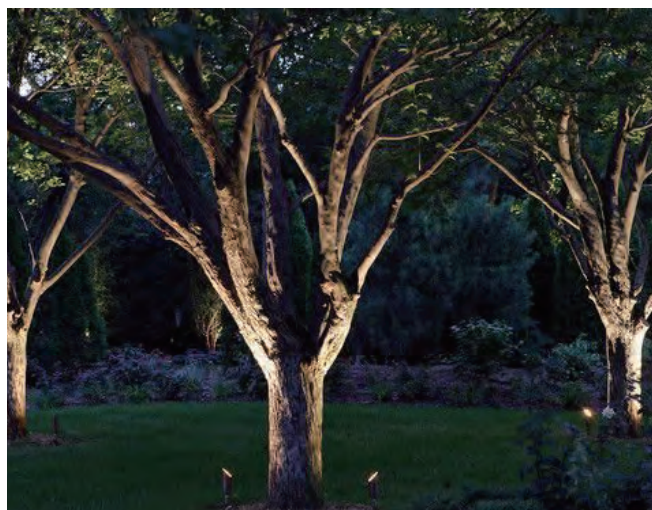
Shape Light

Flood Light

투광등

Installation Case

HD-0004



View

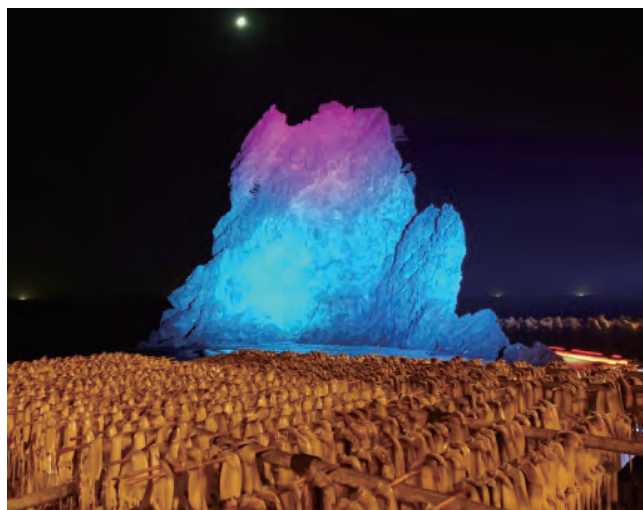


Specification

모델명	HD-0004
소비전력	30W
Material	Aluminum Die-casting
Cover	Tempered Glass
SIZE(mm)	ø149.7x223.8xH192.8
식별번호	24891485
단가	310,000
IP/색온도	<div>IP 65</div> <div>MONO COLOR</div> <div>RGB</div>

Installation Case

HD-0003



View



Specification

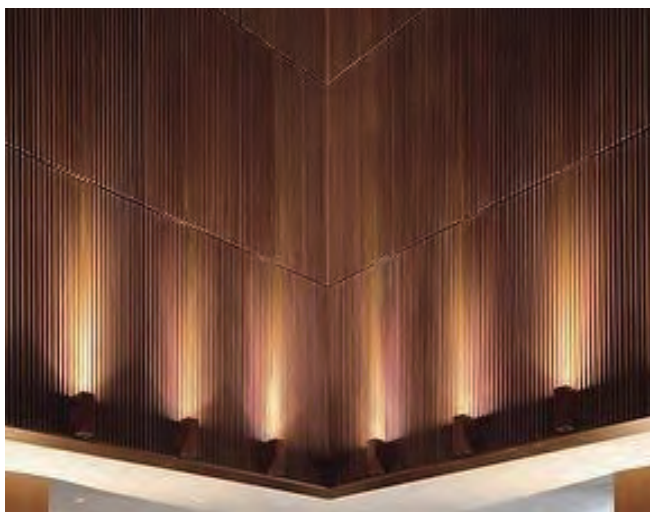
모델명	HD-0003
소비전력	36W
Material	Aluminum Die-casting
Cover	Tempered Glass
SIZE(mm)	ø209.7x242.7xH252.8
식별번호	24891484
단가	420,000
IP/색온도	<div>IP 65</div> <div>MONO COLOR</div> <div>RGB</div>

Flood Light

투광등

Installation Case

HD-00S



View



Specification

모델명	HD-00S
소비전력	36W
Material	Aluminum Die-casting
Cover	Tempered Glass
SIZE(mm)	ø165x206.8xH231.6
식별번호	24891483
단가	390,000
IP/색온도	<div>IP 65</div> <div>MONO COLOR</div> <div>RGB</div>

Installation Case

HD-00A



View



Specification

모델명	HD-00A
소비전력	40W
Material	Aluminum Die-casting
Cover	Tempered Glass
SIZE(mm)	ø220x254xH312
식별번호	24891481
단가	600,000
IP/색온도	<div>IP 65</div> <div>MONO COLOR</div> <div>RGB</div>

Flood Light

투광등

Installation Case

HD-00AN



View



Specification

모델명	HD-00AN
소비전력	70W
Material	Aluminum Die-casting
Cover	Tempered Glass
SIZE(mm)	ø234x200xH312.6
식별번호	24891482
단가	660,000
IP/색온도	<div>IP 65</div> <div>MONO COLOR</div> <div>RGB</div>

Installation Case

HD-LFC36-0165



View



Specification

모델명	HD-LFC36-0165
소비전력	36W
Material	Aluminum Die-casting
Cover	Tempered Glass
SIZE(mm)	ø165x169xH165
식별번호	23659682
단가	559,900
IP/색온도	<div>IP 65</div> <div>MONO COLOR</div>

Flood Light

투광등

Installation Case

HD-LFC72N



View



Specification

모델명	HD-LFC72N
소비전력	72W
Material	Aluminum Die-casting
Cover	Tempered Glass
SIZE(mm)	ø225x312xH230
식별번호	24003065
단가	785,400
IP/색온도	<div>IP 65</div> <div>MONO COLOR</div> <div>RGB</div>

Installation Case

HD-LPCF-15A



View



Specification

모델명	HD-LPCF-15A
소비전력	15W
Material	Aluminum Die-casting
Cover	Polycarbonate
SIZE(mm)	ø140x100
식별번호	24891413
단가	360,000
IP/색온도	<div>IP 65</div> <div>MONO COLOR</div> <div>RGB</div>

Flood Light

투광등

Installation Case

HD-LPCF-35.5



View



Specification

모델명	HD-LPCF-35.5
소비전력	35.5W
Material	Aluminum Die-casting
Cover	Tempered Glass
SIZE(mm)	ø180x180xH58
식별번호	24891511
단가	600,000
IP/색온도	<div>IP 65</div> <div>MONO COLOR</div> <div>RGB</div>

Installation Case

HD-LPCF-100A



View



Specification

모델명	HD-LPCF-100A
소비전력	100W
Material	Aluminum Die-casting
Cover	Polycarbonate
SIZE(mm)	ø235x258xH89
식별번호	24891417
단가	990,000
IP/색온도	<div>IP 65</div> <div>MONO COLOR</div> <div>RGB</div>

Flood Light

투광등

Installation Case

HD-LPCF-150U



View



Specification

모델명	HD-LPCF-150U
소비전력	150W
Material	Aluminum Die-casting
Cover	Tempered Glass
SIZE(mm)	ø250x260xH290
식별번호	24891512
단가	1,600,000
IP/색온도	<div>IP 65</div> <div>MONO COLOR</div> <div>RGB</div>

Installation Case

HD-LPCF-200U



View



Specification

모델명	HD-LPCF-200U
소비전력	200W
Material	Aluminum Die-casting
Cover	Tempered Glass
SIZE(mm)	ø320x340xH360
식별번호	24891513
단가	1,900,000
IP/색온도	<div>IP 65</div> <div>MONO COLOR</div> <div>RGB</div>

Flood Light

투광등

Installation Case

HD-LPSF-108A



View

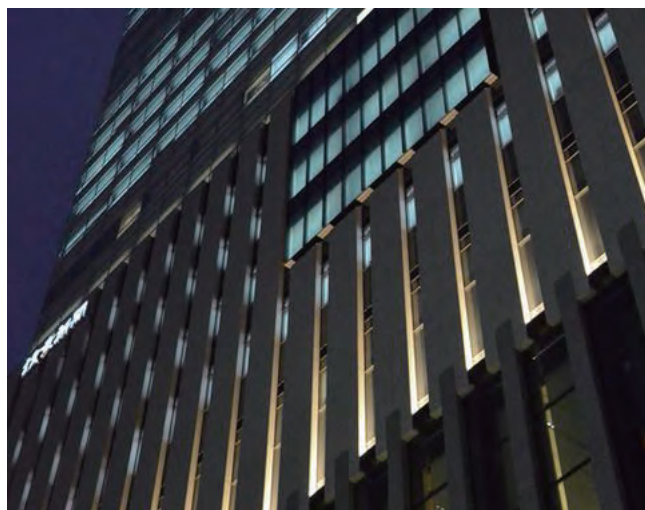


Specification

모델명	HD-LPSF-108A
소비전력	108W
Material	Aluminum Die-casting
Cover	Polycarbonate
SIZE(mm)	438x203xH58
식별번호	24891419
단가	877,000
IP/색온도	<div>IP 65</div> <div>MONO COLOR</div> <div>RGB</div>

Installation Case

HD-LPSF-200



View



Specification

모델명	HD-LPSF-200
소비전력	200W
Material	Aluminum Die-casting
Cover	Tempered Glass
SIZE(mm)	438x203xH58
식별번호	24891514
단가	1,150,000
IP/색온도	<div>IP 65</div> <div>MONO COLOR</div> <div>RGB</div>

Flood Light

투광등

Installation Case

HD-LPF-PQ72



View



Specification

모델명	HD-LPF-PQ72
소비전력	72W
Material	Aluminum Die-casting
Cover	Polycarbonate
SIZE(mm)	291x204xH125
식별번호	24891418
단가	730,000
IP/색온도	<div>IP 65</div> <div>MONO COLOR</div> <div>RGB</div>

Installation Case

HDFL-210B



View



Specification

모델명	HDFL-210B
소비전력	48W
Material	Aluminum Die-casting
Cover	Tempered Glass
SIZE(mm)	210x257xH50
식별번호	24565932
단가	630,000
IP/색온도	<div>IP 65</div> <div>MONO COLOR</div> <div>RGB</div>

Flood Light

투광등

Installation Case

HDFL-76



View



Specification

모델명	HDFL-76
소비전력	8W
Material	Aluminum Die-casting
Cover	Tempered Glass
SIZE(mm)	98x72xH123
식별번호	24565926
단가	380,000
IP/색온도	<div>IP 65</div> <div>MONO COLOR</div> <div>RGB</div>

Installation Case

HDFL-1015B



View



Specification

모델명	HDFL-1015B
소비전력	96W
Material	Aluminum Die-casting
Cover	Tempered Glass
SIZE(mm)	1015x89xH117
식별번호	24565925
단가	1,119,000
IP/색온도	<div>IP 65</div> <div>MONO COLOR</div> <div>RGB</div>

Flood Light

투광등

Installation Case




HD-LPLF-36 / HD-LPLF-54 / HD-LPLF-72



View



Specification

모델명	HD-LPLF-36	HD-LPLF-54	HD-LPLF-72
소비전력	36W	54W	72W
Material	Aluminum Die-casting	Aluminum Die-casting	Aluminum Die-casting
Cover	Tempered Glass	Tempered Glass	Tempered Glass
SIZE(mm)	998x65xH48	998x65xH48	998x65xH48
식별번호	24891509	24891510	24891411
단가	560,000	650,000	720,000
IP/색온도	<div><div>IP65</div><div>MONO COLOR</div><div></div></div>	<div><div>IP65</div><div>MONO COLOR</div><div></div></div>	<div><div>IP65</div><div>MONO COLOR</div><div></div></div>

Wall Light

벽등

Installation Case

HD-0520L



View



Specification

모델명	HD-0520L
소비전력	24W
Material	Aluminum Die-casting
Cover	Tempered Glass
SIZE(mm)	175x250xH303
식별번호	24891475
단가	340,000
IP/색온도	<div>IP 65</div> <div>MONO COLOR</div>

Installation Case

HD-0530L



View



Specification

모델명	HD-0530L
소비전력	24Wx2
Material	Aluminum Die-casting
Cover	Tempered Glass
SIZE(mm)	175x250xH423
식별번호	24891476
단가	510,000
IP/색온도	<div>IP 65</div> <div>MONO COLOR</div>

Wall Light

벽등

Installation Case

HD-0016



View



Specification

모델명	HD-0016
소비전력	10W
Material	Aluminum Die-casting
Cover	Tempered Glass
SIZE(mm)	120x157xH256
식별번호	24891470
단가	280,000
IP/색온도	<div>IP 65</div> <div>MONO COLOR</div>

GOGO Light

고보조명

Installation Case

HD-T-4



View



Specification

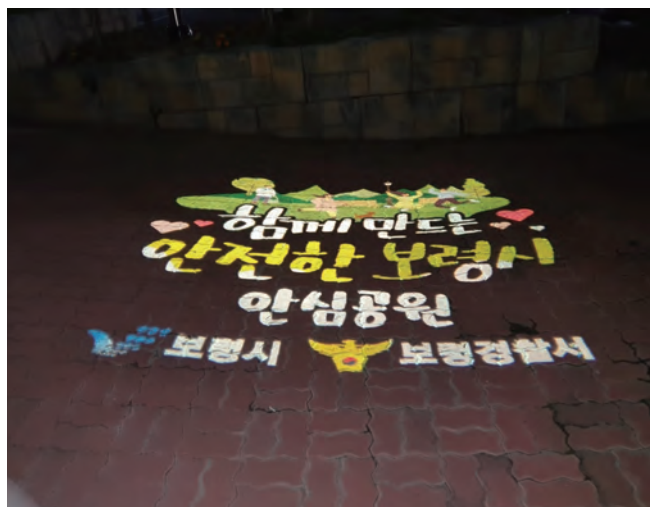
모델명	HD-T-4
소비전력	40W
Material	Aluminum Die-casting
Cover	Tempered Glass
SIZE(mm)	235x173xH226
식별번호	24891490
단가	700,000
IP/색온도	<div>IP 65</div> <div>RGB</div>

GOBO Light

고보조명

Installation Case

HD-T-8



View



Specification

모델명	HD-T-8
소비전력	80W
Material	Aluminum Die-casting
Cover	Tempered Glass
SIZE(mm)	241x173xH226
식별번호	24891491
단가	1,120,000
IP/색온도	<div>IP 65</div> <div>RGB</div>

Installation Case

HD-T-10



View



Specification

모델명	HD-T-10
소비전력	100W
Material	Aluminum Die-casting
Cover	Tempered Glass
SIZE(mm)	241x173xH226
식별번호	24891492
단가	1,400,000
IP/색온도	<div>IP 65</div> <div>RGB</div>

GOBO Light

고보조명

Installation Case

HD-T-20



View



Specification

모델명	HD-T-20
소비전력	200W
Material	Aluminum Die-casting
Cover	Tempered Glass
SIZE(mm)	390x195xH320
식별번호	24891493
단가	2,300,000
IP/색온도	<div>IP 65</div> <div>RGB</div>

Installation Case

HD-T-30



View



Specification

모델명	HD-T-30
소비전력	300W
Material	Aluminum Die-casting
Cover	Tempered Glass
SIZE(mm)	390x195xH320
식별번호	24891494
단가	3,000,000
IP/색온도	<div>IP 65</div> <div>RGB</div>

GOBO Light

고보조명

Installation Case

HD-4T-8



Installation Case

HD-4T-10



View



Specification

모델명	HD-4T-8
소비전력	80W
Material	Aluminum Die-casting
Cover	Tempered Glass
SIZE(mm)	334x132x220
식별번호	24891486
	2,100,000
IP/색온도	IP 65 RGB

Specification

모델명	HD-4T-10
소비전력	100W
Material	Aluminum Die-casting
Cover	Tempered Glass
SIZE(mm)	334x135x220
식별번호	24891487
단가	2,300,000
IP/색온도	IP 65 RGB

GOBO Light

고보조명

Installation Case

HD-4T-20



View



Specification

모델명	HD-4T-20
소비전력	200W
Material	Aluminum Die-casting
Cover	Tempered Glass
SIZE(mm)	500x237xH398
식별번호	24891488
단가	3,100,000
IP/색온도	<div>IP 65</div> <div>RGB</div>

Installation Case

HD-4T-30



View



Specification

모델명	HD-4T-30
소비전력	300W
Material	Aluminum Die-casting
Cover	Tempered Glass
SIZE(mm)	500x237xH398
식별번호	24891489
단가	3,700,000
IP/색온도	<div>IP 65</div> <div>RGB</div>

Bar Light

바조명

Installation Case

HD-LPOS-6



View



Specification

모델명	HD-LPOS-6
소비전력	6W
Material	Aluminum Extrude
Cover	Polycarbonate Cover
SIZE(mm)	600x17xH17
식별번호	24891495
단가	120,000
IP/색온도	<div>IP 65</div> <div>MONO COLOR</div> <div>RGB</div>

Installation Case

HD-LPOS-08



View



Specification

모델명	HD-LPOS-08
소비전력	11.5W
Material	Aluminum Extrude
Cover	Polycarbonate Cover
SIZE(mm)	800x17xH17
식별번호	24891496
단가	160,000
IP/색온도	<div>IP 65</div> <div>MONO COLOR</div> <div>RGB</div>

Bar Light

바조명

Installation Case



HD-LPOS-10 / HD-LPOS-10N



View



Specification

모델명	HD-LPOS-10	HD-LPOS-10N
소비전력	14.4W	15W
Material	Aluminum Extrude	Aluminum Extrude
Cover	Polycarbonate	Polycarbonate
SIZE(mm)	1000x17xH17	1000x17xH17
식별번호	24891497	24891498
단가	180,000	190,000
IP/색온도	<div>IP 65</div> <div>MONO COLOR</div> <div></div>	<div>IP 65</div> <div>MONO COLOR</div> <div></div>

Bar Light

바조명

Installation Case

HD-LPOS-22



View

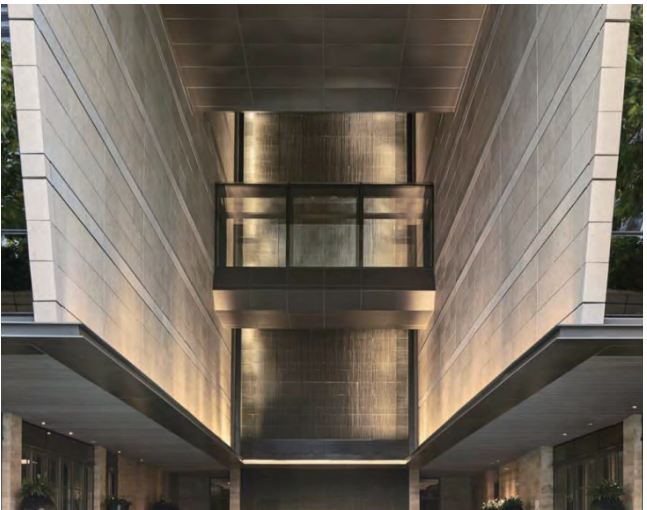


Specification

모델명	HD-LPOS-22
소비전력	22W
Material	Aluminum Extrude
Cover	Polycarbonate
SIZE(mm)	1500x17xH16
식별번호	24891499
단가	320,000
IP/색온도	<div>IP 65</div> <div>MONO COLOR</div> <div>RGB</div>

Installation Case

HD-LPOS-15



View



Specification

모델명	HD-LPOS-15
소비전력	15W
Material	Aluminum Die-casting
Cover	Polycarbonate
SIZE(mm)	1000x17xH16
식별번호	24912050
단가	280,000
IP/색온도	<div>IP 65</div> <div>MONO COLOR</div> <div>RGB</div>

Bar Light

바조명

Installation Case


HD-LPOS-24



View



Specification

모델명	HD-LPOS-24
소비전력	24W
Material	Aluminum Die-casting
Cover	Polycarbonate
SIZE(mm)	1000x21xH21
식별번호	24891500
단가	280,000
IP/색온도	<div>IP 65</div> <div>MONO COLOR</div> <div> RGB</div>

Installation Case

HD-LPUV-15



View



Specification

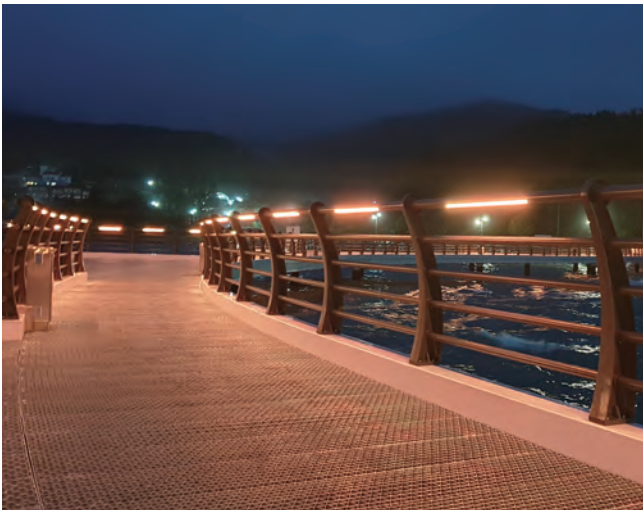
모델명	HD-LPUV-15
소비전력	15W
Material	Aluminum Die-casting
Cover	Polycarbonate
SIZE(mm)	1000x21xH21
식별번호	24891502
단가	310,000
IP/색온도	<div>IP 65</div> <div>UV COLOR</div>

Bar Light

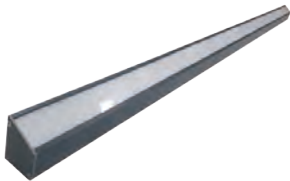
바조명

Installation Case

HD-LPSD-15T



View

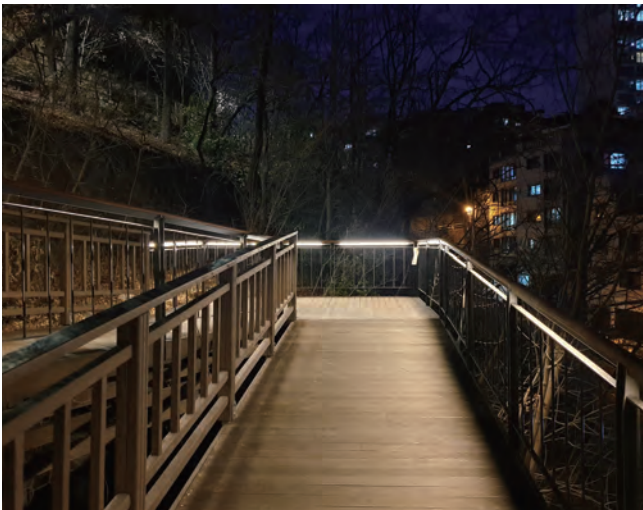


Specification

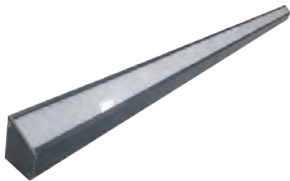
모델명	HD-LPSD-15T
소비전력	15W
Material	Aluminum Die-casting
Cover	Polycarbonate
SIZE(mm)	1000x36xH49
식별번호	24891503
단가	260,000
IP/색온도	<div>IP 65</div> <div>MONO COLOR</div> <div>RGB</div>

Installation Case

HD-LPSD-30T



View



Specification

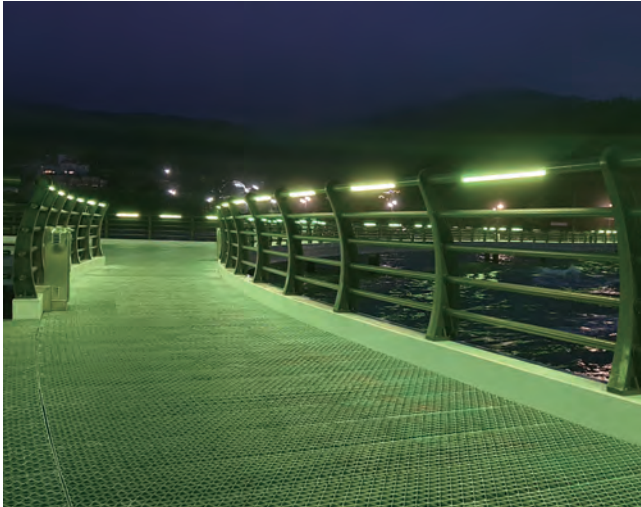
모델명	HD-LPSD-30T
소비전력	30W
Material	Aluminum Die-casting
Cover	Polycarbonate
SIZE(mm)	2000x36xH25
식별번호	24891504
단가	480,000
IP/색온도	<div>IP 65</div> <div>MONO COLOR</div> <div>RGB</div>

Bar Light

바조명

Installation Case


HD-LPSD-15F



View



Specification

모델명	HD-LPSD-15F
소비전력	15W
Material	Aluminum Extrude
Cover	Polycarbonate
SIZE(mm)	1000x50xH56
식별번호	24891505
단가	250,000
IP/색온도	<div>IP 65</div> <div>MONO COLOR</div> <div></div>

Installation Case


HD-LPSD-30F



View



Specification

모델명	HD-LPSD-30F
소비전력	30W
Material	Aluminum Extrude
Cover	Polycarbonate
SIZE(mm)	2000x50xH56
식별번호	24891506
단가	490,000
IP/색온도	<div>IP 65</div> <div>MONO COLOR</div> <div></div>

Bar Light

바조명

Installation Case

HD-LPSH-15S



View



Specification

모델명	HD-LPSH-15S
소비전력	15W
Material	Aluminum Extrude
Cover	Polycarbonate
SIZE(mm)	950x38xH16
식별번호	24891507
단가	260,000
IP/색온도	<div>IP 65</div> <div>MONO COLOR</div>

Installation Case

HD-LPSH-15T



View



Specification

모델명	HD-LPSH-15T
소비전력	15W
Material	Aluminum Extrude
Cover	Polycarbonate
SIZE(mm)	950x33xH16
식별번호	24891508
단가	260,000
IP/색온도	<div>IP 65</div> <div>MONO COLOR</div>

Bar Light

바조명

Installation Case

HD-0158



View



Specification

모델명	HD-0158
소비전력	36W
Material	Aluminum Extrude
Cover	Tempered Glass
SIZE(mm)	1000x37.6xH39.6
식별번호	24891477
단가	230,000
IP/색온도	<div>IP 65</div> <div>MONO COLOR</div>

Installation Case

HD-0158-S



View



Specification

모델명	HD-0158-S
소비전력	18W
Material	Aluminum Extrude
Cover	Tempered Glass
SIZE(mm)	500x37.6xH39.6
식별번호	24891478
단가	160,000
IP/색온도	<div>IP 65</div> <div>MONO COLOR</div>

Bar Light

바조명

Installation Case

HD-LPT15



View

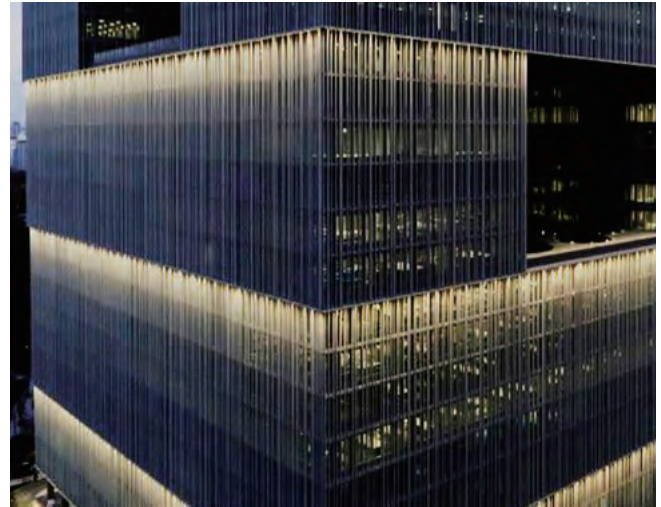


Specification

모델명	HD-LPT15
소비전력	15W
Material	Aluminum Extrude
Cover	Polycarbonate
SIZE(mm)	906x17xH16
식별번호	23905037
단가	210,000
IP/색온도	<div>IP 65</div> <div>MONO COLOR</div> <div>RGB</div>

Installation Case

HD-LPOM15-56Pixel (MEDIA BAR LIGHT)



View



Specification

모델명	HD-LPOM15-56Pixel
소비전력	15W
Material	Aluminum Extrude
Cover	-
SIZE(mm)	1000x21xH21
식별번호	23905038
단가	298,300
IP/색온도	<div>IP 65</div> <div>MONO COLOR</div> <div>RGB</div>

Bar Light

바조명

Installation Case

HDLS30-LRDB



View



Specification

모델명	HDLS30-LRDB
소비전력	30W
Material	Aluminum Extrude
Cover	Tempered Glass
SIZE(mm)	1000x80xH45
식별번호	24565972
단가	470,000
IP/색온도	<div>IP 65</div> <div>MONO COLOR</div>

Installation Case

HDBAR-22



View



Specification

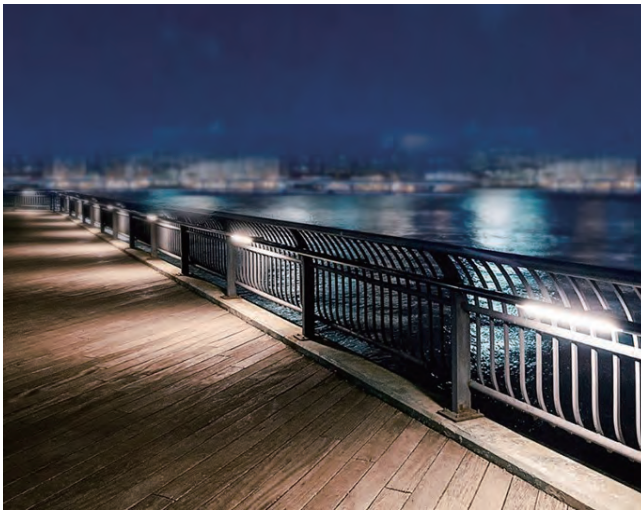
모델명	HDBAR-22
소비전력	14W
Material	Aluminum Die-casting
Cover	Polycarbonate
SIZE(mm)	1000x22xH46
식별번호	24565918
단가	226,000
IP/색온도	<div>IP 65</div> <div>MONO COLOR</div> <div>RGB</div>

Bar Light

바조명

Installation Case

HDBAR-54



View



Specification

모델명	HDBAR-54
소비전력	14W
Material	Aluminum Die-casting
Cover	Polycarbonate
SIZE(mm)	1000x54xH23
식별번호	24565919
단가	239,000
IP/색온도	<div>IP 65</div> <div>MONO COLOR</div> <div>RGB</div>

Installation Case

HDBAR-35



View



Specification

모델명	HDBAR-35
소비전력	14W
Material	Aluminum Die-casting
Cover	Polycarbonate
SIZE(mm)	910x35xH20
식별번호	24565920
단가	239,000
IP/색온도	<div>IP 65</div> <div>MONO COLOR</div> <div>RGB</div>

Bar Light

바조명

Installation Case

HDFL-1000J



View



Specification

모델명	HDFL-1000J
소비전력	24W
Material	Aluminum Die-casting
Cover	Tempered Glass
SIZE(mm)	1000x40xH70
식별번호	24565921
단가	555,000
IP/색온도	<div>IP 65</div> <div>MONO COLOR</div> <div>RGB</div>

Installation Case

HDFX-12



View



Specification

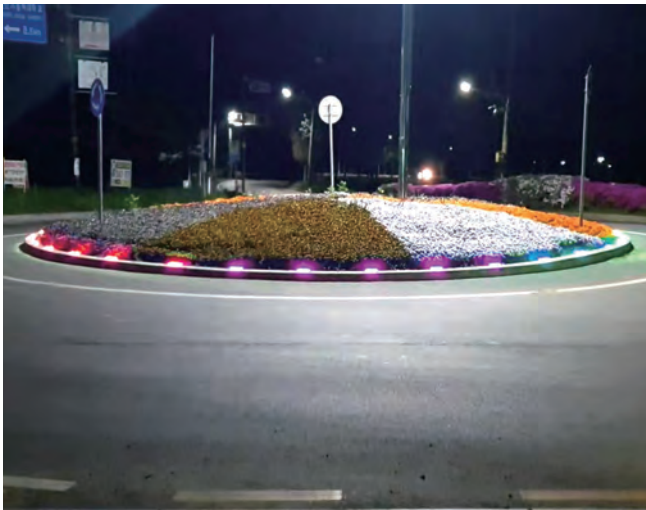
모델명	HDFX-12
소비전력	15W
Material	Silicone
Cover	Silicone
SIZE(mm)	1000x22xH25
식별번호	24565917
단가	219,000
IP/색온도	<div>IP 65</div> <div>MONO COLOR</div> <div>RGB</div>

Inground Light

매입등

Installation Case

HDK-1D



View

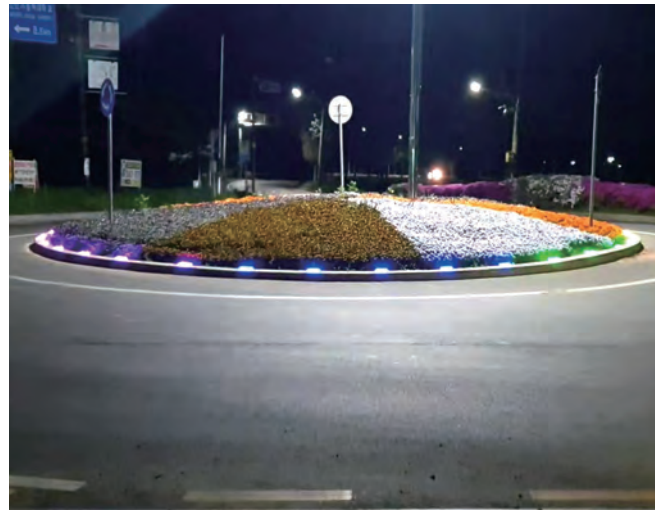


Specification

모델명	HDK-1D
소비전력	1.5W
Material	Aluminum Die-casting
Cover	Polycarbonate
SIZE(mm)	180x85xH35
식별번호	24565970
단가	142,000
IP/색온도	<div>IP 65</div> <div>MONO COLOR</div> <div>RGB</div>

Installation Case

HDK-2D



View



Specification

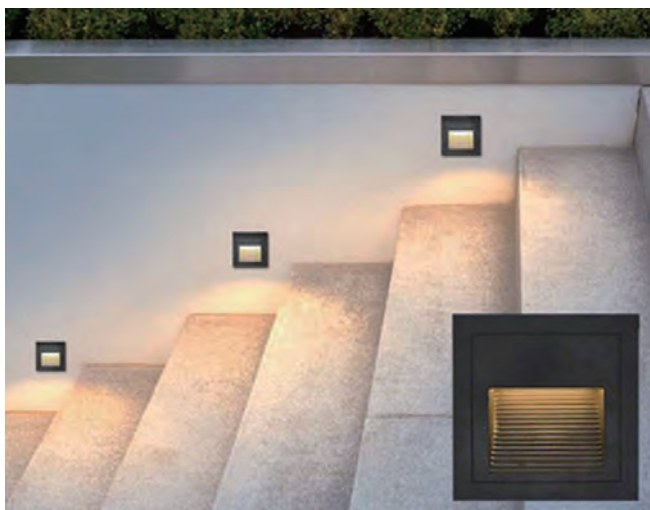
모델명	HDK-2D
소비전력	1.5Wx2
Material	Aluminum Die-casting
Cover	Polycarbonate
SIZE(mm)	180x85xH35
식별번호	24565971
단가	222,000
IP/색온도	<div>IP 65</div> <div>MONO COLOR</div> <div>RGB</div>

Inground Light

매입등

Installation Case

HD-0142



View



Specification

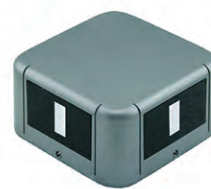
모델명	HD-0142		
소비전력	4W		
Material	Aluminum Die-casting		
Cover	Tempered Glass		
SIZE(mm)	120x120xH98		
식별번호	24891472		
단가	180,000		
IP/색온도	<table><tr><td>IP 65</td><td>MONO COLOR</td></tr></table>	IP 65	MONO COLOR
IP 65	MONO COLOR		

Installation Case

HD-0017



View



Specification

모델명	HD-0017		
소비전력	8W		
Material	Aluminum Die-casting		
Cover	Tempered Glass		
SIZE(mm)	129x129xH71		
식별번호	24891471		
단가	320,000		
IP/색온도	<table><tr><td>IP 65</td><td>MONO COLOR</td></tr></table>	IP 65	MONO COLOR
IP 65	MONO COLOR		

Inground Light

매입등

Installation Case

HD-0134



View



Specification

모델명	HD-0134
소비전력	12W
Material	Aluminum Die-casting
Cover	Polycarbonate
SIZE(mm)	281x112xH86
식별번호	24891473
단가	180,000
IP/색온도	<div>IP 65</div> <div>MONO COLOR</div>

Installation Case

HD-0150



View



Specification

모델명	HD-0150
소비전력	15W
Material	Aluminum Die-casting
Cover	Tempered Glass
SIZE(mm)	280x95xH100
식별번호	24891474
단가	260,000
IP/색온도	<div>IP 65</div> <div>MONO COLOR</div>

Inground Light

매입등

Installation Case

HD-LPQG-6A



View

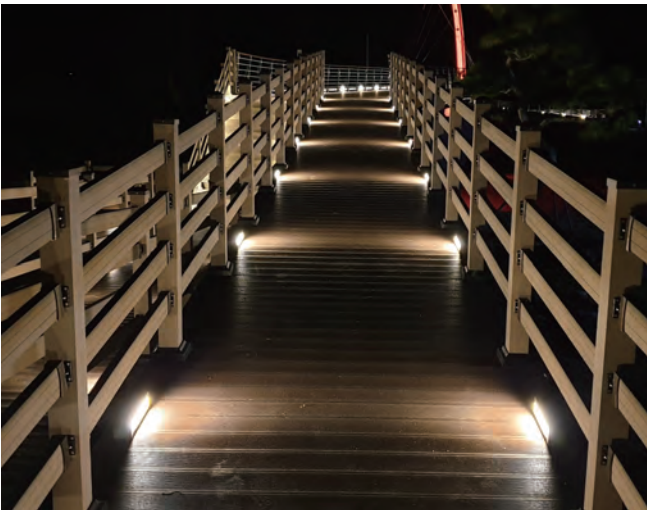


Specification

모델명	HD-LPQG-6A
소비전력	6W
Material	Aluminum Die-casting
Cover	Polycarbonate
SIZE(mm)	322x96xH42
식별번호	24891412
단가	380,000
IP/색온도	<div>IP 65</div> <div>MONO COLOR</div> <div>RGB</div>

Installation Case

HD-LPQG-9



View



Specification

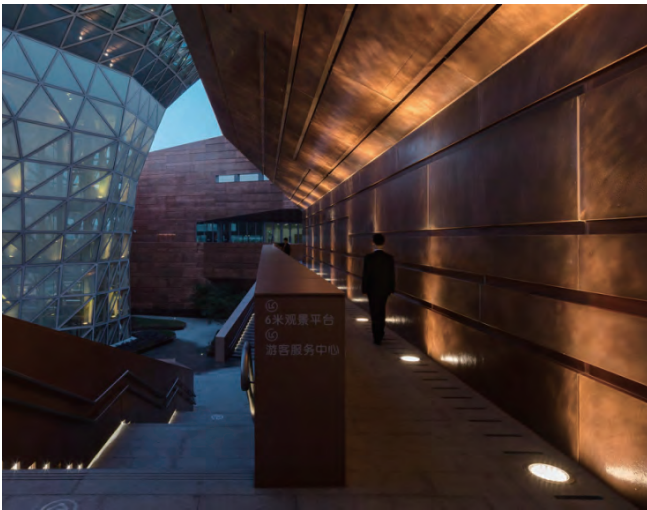
모델명	HD-LPQG-9
소비전력	9W
Material	Aluminum Die-casting
Cover	Polycarbonate
SIZE(mm)	680x96xH38
식별번호	24891517
단가	540,000
IP/색온도	<div>IP 65</div> <div>MONO COLOR</div> <div>RGB</div>

Inground Light

매입등

Installation Case

HD-LPQG-14



View

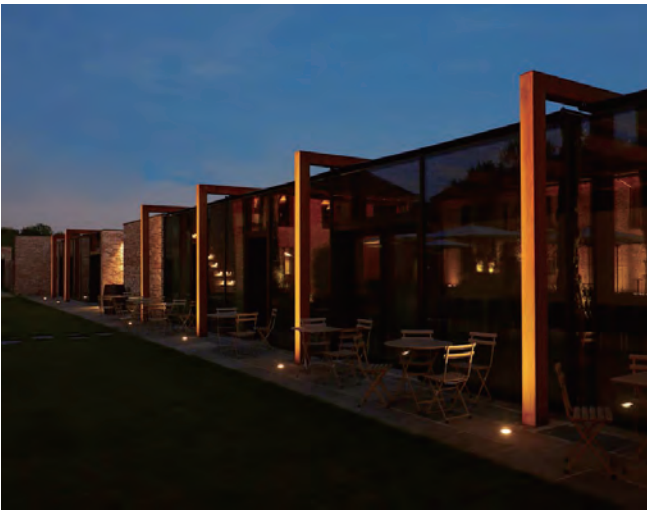


Specification

모델명	HD-LPQG-14
소비전력	14W
Material	Aluminum Die-casting
Cover	Tempered Glass
SIZE(mm)	1000x96xH38
식별번호	24891518
단가	780,000
IP/색온도	<div>IP 65</div> <div>MONO COLOR</div> <div>RGB</div>

Installation Case

HD-LPQG-36



View



Specification

모델명	HD-LPQG-36
소비전력	36W
Material	Aluminum Die-casting
Cover	Tempered Glass
SIZE(mm)	1000x78xH48
식별번호	24891519
단가	860,000
IP/색온도	<div>IP 65</div> <div>MONO COLOR</div> <div>RGB</div>

Inground Light

매입등

Installation Case

HD-LPST-10



View



Specification

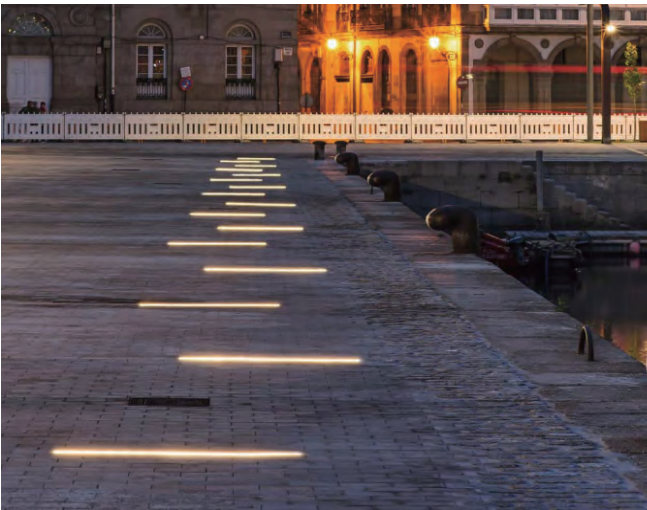
모델명	HD-LPST-10
소비전력	10W
Material	Aluminum Die-casting
Cover	Polycarbonate
SIZE(mm)	320x80xH94
식별번호	24891522
단가	340,000

IP/색온도

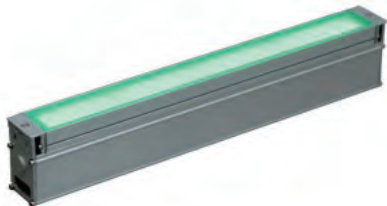


Installation Case

HD-0180



View



Specification

모델명	HD-0180
소비전력	7.5W
Material	Aluminum Die-casting
Cover	Tempered Glass
SIZE(mm)	500x51xH60
식별번호	24891480
단가	230,000

IP/색온도



Inground Light

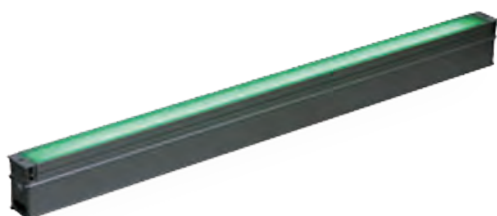
매입등

Installation Case

HD-0170



View



Specification

모델명	HD-0170
소비전력	18W
Material	Aluminum Die-casting
Cover	Tempered Glass
SIZE(mm)	1220x51xH60
식별번호	24891479
단가	330,000
IP/색온도	<div>IP 65</div> <div>MONO COLOR</div> <div>RGB</div>

Installation Case

HD-LPG-SC3A



View



Specification

모델명	HD-LPG-SC3A
소비전력	3W
Material	Aluminum Die-casting
Cover	Polycarbonate
SIZE(mm)	ø114xH48
식별번호	24891414
단가	320,000
IP/색온도	<div>IP 65</div> <div>MONO COLOR</div> <div>RGB</div>

Inground Light

매입등

Installation Case

HD-LPCG-18A



View



Specification

모델명	HD-LPCG-18A
소비전력	18W
Material	Aluminum Die-casting
Cover	Polycarbonate
SIZE(mm)	ø180xH52
식별번호	24891416
단가	550,000
IP/색온도	<div>IP 65</div> <div>MONO COLOR</div> <div>RGB</div>

Installation Case

HD-LPG-PC36A



View



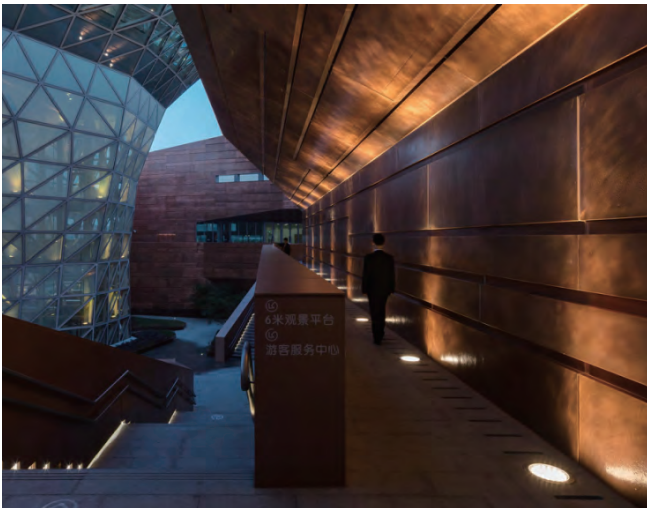
Specification

모델명	HD-LPG-PC36A
소비전력	36W
Material	Aluminum Die-casting
Cover	Polycarbonate
SIZE(mm)	ø217xH59
식별번호	24891415
단가	750,000
IP/색온도	<div>IP 65</div> <div>MONO COLOR</div> <div>RGB</div>

Inground Light

매입등

Installation Case HD-LPCG-20



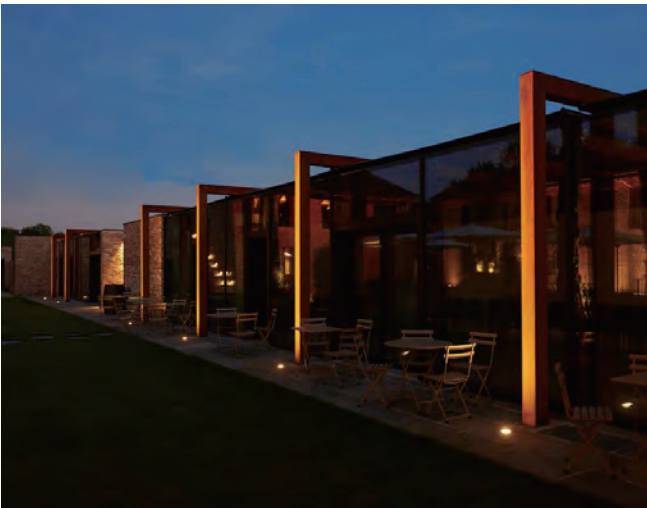
View



Specification

모델명	HD-LPCG-20
소비전력	20W
Material	Aluminum Die-casting
Cover	Tempered Glass
SIZE(mm)	ø260xH72
식별번호	24891516
단가	950,000
IP/색온도	<div>IP 65</div> <div>MONO COLOR</div> <div>RGB</div>

Installation Case HD-LPCP-C1



View



Specification

모델명	HD-LPCP-C1
소비전력	1W
Material	Aluminum Die-casting
Cover	Polycarbonate
SIZE(mm)	ø40xH45
식별번호	24891515
단가	180,000
IP/색온도	<div>IP 65</div> <div>MONO COLOR</div> <div>RGB</div>

Inground Light

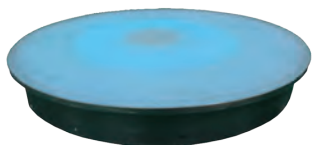
매입등

Installation Case

HDUG-400A



View



Specification

모델명	HDUG-400A
소비전력	20W
Material	SUS
Cover	Tempered Glass
SIZE(mm)	ø400xH57
식별번호	24891420
단가	590,000
IP/색온도	<div>IP 65</div> <div>MONO COLOR</div> <div>RGB</div>

Beacon Bollards Light

볼라드

Installation Case

HDBL-800CA



View



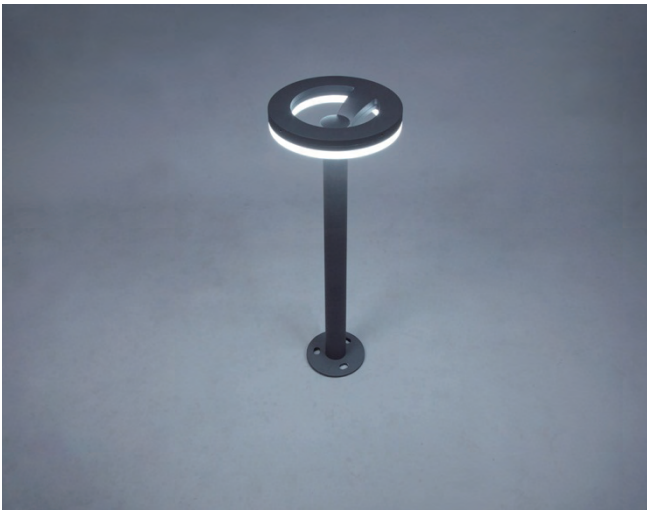
Specification

모델명	HDBL-800CA
소비전력	12W
Material	Aluminum Die-casting
Cover	Polycarbonate
SIZE(mm)	121x126xH800
식별번호	24891421
단가	390,000
IP/색온도	<div>IP 65</div> <div>MONO COLOR</div>

Beacon Bollards Light

볼라드

Installation Case
HDBL-800G



View



Specification

모델명	HDBL-800G
소비전력	12W
Material	Aluminum Die-casting
Cover	Polycarbonate
SIZE(mm)	ø220xH800
식별번호	24565900
단가	423,000
IP/색온도	<div>IP 65</div> <div>MONO COLOR</div>

Installation Case
HDBL-800K



View



Specification

모델명	HDBL-800K
소비전력	28W
Material	Aluminum Die-casting
Cover	Polycarbonate
SIZE(mm)	ø300xH900
식별번호	24565903
단가	624,000
IP/색온도	<div>IP 65</div> <div>MONO COLOR</div>

Beacon Bollards Light

볼라드

Installation Case
HD-0011



View



Specification

모델명	HD-0011
소비전력	15W
Material	Aluminum Die-casting
Cover	Polycarbonate
SIZE(mm)	ø230xH800
식별번호	24891459
단가	360,000
IP/색온도	<div>IP 65</div> <div>MONO COLOR</div>

Installation Case
HD-0012



View



Specification

모델명	HD-0012
소비전력	15W
Material	Aluminum Die-casting
Cover	Polycarbonate
SIZE(mm)	ø160xH980
식별번호	24891461
단가	370,000
IP/색온도	<div>IP 65</div> <div>MONO COLOR</div>

Beacon Bollards Light

볼라드

Installation Case

HD-0012Q



View



Specification

모델명	HD-0012Q
소비전력	15W
Material	Aluminum Die-casting
Cover	Polycarbonate
SIZE(mm)	120x120xH800
식별번호	24891465
단가	360,000
IP/색온도	<div>IP 65</div> <div>MONO COLOR</div>

Installation Case

HD-0106



View



Specification

모델명	HD-0106
소비전력	15W
Material	Aluminum Die-casting
Cover	Polycarbonate
SIZE(mm)	284x213xH800
식별번호	24891464
단가	390,000
IP/색온도	<div>IP 65</div> <div>MONO COLOR</div>

Beacon Bollards Light

볼라드

Installation Case
HD-0104



View



Specification

모델명	HD-0104
소비전력	15W
Material	Aluminum Die-casting
Cover	Polycarbonate
SIZE(mm)	284x213xH800
식별번호	24891466
단가	640,000
IP/색온도	<div>IP 65</div> <div>MONO COLOR</div>

Installation Case
HD-0105



View



Specification

모델명	HD-0105
소비전력	15W
Material	Aluminum Die-casting
Cover	Polycarbonate
SIZE(mm)	160x160xH1006
식별번호	24891463
단가	390,000
IP/색온도	<div>IP 65</div> <div>MONO COLOR</div>

Beacon Bollards Light

볼라드

Installation Case
HD-0011S



View



Specification

모델명	HD-0011S
소비전력	15W
Material	Aluminum Die-casting
Cover	Polycarbonate
SIZE(mm)	ø230xH400
식별번호	24891460
단가	370,000
IP/색온도	<div>IP 65</div> <div>MONO COLOR</div>

Installation Case
HD-0012S



View



Specification

모델명	HD-0012S
소비전력	15W
Material	Aluminum Die-casting
Cover	Polycarbonate
SIZE(mm)	ø160xH378
식별번호	24891462
단가	340,000
IP/색온도	<div>IP 65</div> <div>MONO COLOR</div>

Beacon Bollards Light

볼라드

Installation Case
HDG-0568



View



Specification

모델명	HDG-0568
소비전력	10W
Material	Aluminum Die-casting
Cover	Polycarbonate
SIZE(mm)	220x220xH270
식별번호	24891468
단가	260,000
IP/색온도	<div>IP 65</div> <div>MONO COLOR</div>

Installation Case
HDG-0586



View



Specification

모델명	HDG-0586
소비전력	10W
Material	Aluminum Die-casting
Cover	Polycarbonate
SIZE(mm)	150x150xH280
식별번호	24891469
단가	240,000
IP/색온도	<div>IP 65</div> <div>MONO COLOR</div>

Beacon Bollards Light

볼라드

Installation Case
HDG-0585



View



Specification

모델명	HDG-0585
소비전력	10W
Material	Aluminum Die-casting
Cover	Polycarbonate
SIZE(mm)	160x160xH250
식별번호	24891467
단가	260,000
IP/색온도	IP 65 MONO COLOR

Installation Case
HD-LPSC-10U-1



View



Specification

모델명	HD-LPSC-10U-1
소비전력	10W
Material	Aluminum Die-casting
Cover	Polycarbonate
SIZE(mm)	150x150xH300
식별번호	24891520
단가	360,000
IP/색온도	IP 65 MONO COLOR

Beacon Bollards Light

볼라드

Installation Case

HD-LPSC-10U-2



View



Specification

모델명	HD-LPSC-10U-2	
소비전력	10W	
Material	Aluminum Die-casting	
Cover	Polycarbonate	
SIZE(mm)	100x100xH280	
식별번호	24891521	
단가	390,000	
IP/색온도	IP 65	MONO COLOR

Installation Case

HDBL-180



View



Specification

모델명	HDBL-180	
소비전력	28W	
Material	Aluminum Die-casting	
Cover	Polycarbonate	
SIZE(mm)	ø300xH180	
식별번호	24565904	
단가	580,000	
IP/색온도	IP 65	MONO COLOR

Beacon Bollards Light

볼라드

Installation Case
HD-0002J



View



Specification

모델명	HD-0002J
소비전력	9W
Material	FRP
Cover	Polycarbonate
SIZE(mm)	235x235xH510
식별번호	24891457
단가	450,000
IP/색온도	IP 65 MONO COLOR

Installation Case
HD-0002M



View



Specification

모델명	HD-0002M
소비전력	10W
Material	FRP
Cover	Tempered Glass
SIZE(mm)	300x300xH410
식별번호	24896799
단가	380,000
IP/색온도	IP 65 MONO COLOR

Beacon Bollards Light

볼라드

Installation Case
HD-0002D



View



Specification

모델명	HD-0002D
소비전력	22W
Material	FRP
Cover	Glass
SIZE(mm)	290x220xH200
식별번호	24891458
단가	480,000
IP/색온도	<div>IP 65</div> <div>MONO COLOR</div>

Pole Light

폴 조명

Installation Case
HD-003-108



View



Specification

모델명	HD-003-108
소비전력	50W
Material	Aluminum Die-casting
Cover	Polycarbonate
SIZE(mm)	ø530xH750
식별번호	24891452
단가	720,000
IP/색온도	<div>IP 65</div> <div>MONO COLOR</div>

Pole Light

폴 조명

Installation Case

HD-003-109



View



Specification

모델명	HD-003-109
소비전력	50W
Material	Aluminum Die-casting
Cover	Polycarbonate
SIZE(mm)	ø482xH618
식별번호	24891453
단가	790,000
IP/색온도	IP 65 MONO COLOR

Installation Case

HD-003-101



View



Specification

모델명	HD-003-101
소비전력	60W
Material	Aluminum Die-casting
Cover	Polycarbonate
SIZE(mm)	ø628xH795
식별번호	24891454
단가	780,000
IP/색온도	IP 65 MONO COLOR

Pole Light

폴 조명

Installation Case

HD-003-102



View



Specification

모델명	HD-003-102
소비전력	60W
Material	Aluminum Die-casting
Cover	Polycarbonate
SIZE(mm)	658x323xH291
식별번호	24891455
단가	800,000
IP/색온도	<div>IP 65</div> <div>MONO COLOR</div>

Installation Case

HD-003-201



View



Specification

모델명	HD-003-201
소비전력	50W
Material	Aluminum Die-casting
Cover	Polycarbonate
SIZE(mm)	ø600xH610
식별번호	24891456
단가	870,000
IP/색온도	<div>IP 65</div> <div>MONO COLOR</div>

Pole Light

폴 조명

Installation Case

HD-003-106



View



Specification

모델명	HD-003-106
소비전력	60W
Material	Aluminum Die-casting
Cover	Polycarbonate
SIZE(mm)	ø510xH530
식별번호	24891450
단가	760,000
IP/색온도	<div>IP 65</div> <div>MONO COLOR</div>

Installation Case

HD-003-107



View



Specification

모델명	HD-003-107
소비전력	60W
Material	Aluminum Die-casting
Cover	Polycarbonate
SIZE(mm)	ø530xH750
식별번호	24891451
단가	570,000
IP/색온도	<div>IP 65</div> <div>MONO COLOR</div>

Column Light

열주등

Installation Case

HDC-142-MD



View



Specification

모델명	HDC-142-MD
소비전력	60W
Material	Aluminum Pipe
Cover	Polycarbonate
SIZE(mm)	250x150xH3000
식별번호	24565976
단가	2,803,000
IP/색온도	<div>IP 65</div> <div>MONO COLOR</div>

Installation Case

HDC-190-LBR



View



Specification

모델명	HDC-190-LBR
소비전력	118W
Material	Aluminum Pipe
Cover	Acrylic
SIZE(mm)	204x204xH3100
식별번호	24565975
단가	3,204,000
IP/색온도	<div>IP 65</div> <div>MONO COLOR</div>

Column Light

열주등

Installation Case
HDC-140-CSCR-MD



View



Specification

모델명	HDC-140-CSCR-MD
소비전력	60W
Material	Aluminum Pipe
Cover	Polycarbonate
SIZE(mm)	1200x120xH3950
식별번호	24565981
단가	2,760,000
IP/색온도	<div>IP 65</div> <div>MONO COLOR</div>

Installation Case
HDC-170-CR



View



Specification

모델명	HDC-170-CR
소비전력	60W
Material	Aluminum Pipe
Cover	Polycarbonate
SIZE(mm)	1700x140xH3950
식별번호	24569752
단가	2,989,000
IP/색온도	<div>IP 65</div> <div>MONO COLOR</div>

Column Light

열주등

Installation Case

HDC-140-X



View



Specification

모델명	HD-140-X
소비전력	75W
Material	Aluminum Pipe
Cover	Polycarbonate
SIZE(mm)	800x150xH3950
식별번호	23664269
단가	2,288,000
IP/색온도	<div>IP 65</div> <div>MONO COLOR</div>

Installation Case

HDC-141-TY



View



Specification

모델명	HDC-141-TY
소비전력	75W
Material	Aluminum Pipe
Cover	Polycarbonate
SIZE(mm)	500x180xH3270
식별번호	24565980
단가	2,975,000
IP/색온도	<div>IP 65</div> <div>MONO COLOR</div>

Column Light

열주등

Installation Case HDC-STSL-SFR



View



Specification

모델명	HDC-STSL-SFR
소비전력	146W(RGB 112W)
Material	Stainless Pipe
Cover	Acrylic
SIZE(mm)	ø165xH3500
식별번호	24891409
단가	2,354,000

IP/색온도



Installation Case HDC-STSL-CC



View



Specification

모델명	HDC-STSL-CC
소비전력	114W(RGB 80W)
Material	Stainless Pipe
Cover	Acrylic
SIZE(mm)	ø165xH3500
식별번호	24565977
단가	2,832,000

IP/색온도



Column Light

열주등

Installation Case

HDC-140-SV



View



Specification

모델명	HDC-140-SV
소비전력	125W
Material	Aluminum Pipe
Cover	Polycarbonate
SIZE(mm)	1000x150xH3950
식별번호	24565979
단가	2,717,000
IP/색온도	<div>IP 65</div> <div>MONO COLOR</div>

Installation Case

HDC-190-UD



View



Specification

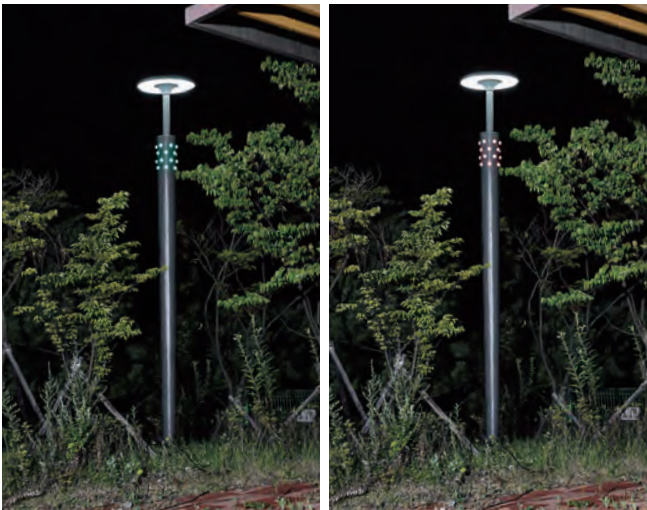
모델명	HDC-190-UD
소비전력	140W(RGB 40W)
Material	Aluminum Pipe
Cover	Polycarbonate
SIZE(mm)	645x645xH3950
식별번호	24565973
단가	3,490,000
IP/색온도	<div>IP 65</div> <div>MONO COLOR</div> <div>RGB</div>

Column Light

열주등

Installation Case

HDC-STL-UDB



View



Specification

모델명	HDC-STL-UDB
소비전력	148W(RGB 48W)
Material	Steel powder paint
Cover	Polycarbonate
SIZE(mm)	645x645xH3950
식별번호	24565974
단가	3,432,000

IP/색온도



Installation Case

HDC-150L-XC



View



Specification

모델명	HDC-150L-XC
소비전력	60W
Material	Aluminum Pipe
Cover	실리콘
SIZE(mm)	800x160xH3900
식별번호	24891431
단가	2,000,000

IP/색온도



Column Light

열주등

Installation Case
HDC-170-XC



View



Specification

모델명	HDC-170-XC
소비전력	60W
Material	Aluminum Pipe
Cover	실리콘
SIZE(mm)	800x140xH3900
식별번호	24891432
단가	2,300,000
IP/색온도	<div>IP 65</div> <div>MONO COLOR</div>

Installation Case
HDC-150L-SVC



View



Specification

모델명	HDC-150L-SVC
소비전력	80W
Material	Aluminum Pipe
Cover	실리콘
SIZE(mm)	800x160xH3900
식별번호	24891439
단가	2,400,000
IP/색온도	<div>IP 65</div> <div>MONO COLOR</div>

Column Light

열주등

Installation Case
HDC-172-CRC



View



Specification

모델명	HDC-172-CRC
소비전력	60W
Material	Aluminum Pipe
Cover	실리콘
SIZE(mm)	1000x123xH3900
식별번호	24891433
단가	2,600,000
IP/색온도	IP 65 MONO COLOR

Installation Case
HDC-170-SVC



View



Specification

모델명	HDC-170-SVC
소비전력	60W
Material	Aluminum Pipe
Cover	실리콘
SIZE(mm)	950x140xH3900
식별번호	24891440
단가	2,600,000
IP/색온도	IP 65 MONO COLOR

Column Light

열주등

Installation Case

HDC-148-1XC-FR



View



Specification

모델명	HDC-148-1XC-FR
소비전력	90W
Material	Aluminum Pipe
Cover	실리콘
SIZE(mm)	760x105xH3900
식별번호	24891442
단가	3,100,000
IP/색온도	<div>IP 65</div> <div>MONO COLOR</div> <div>RGB</div> <div>Design Customizable</div>

Installation Case

HDC-148-SV-BB



View



Specification

모델명	HDC-148-SV-BB
소비전력	110W
Material	Aluminum Pipe
Cover	실리콘
SIZE(mm)	840x105xH3900
식별번호	24891663
단가	2,900,000
IP/색온도	<div>IP 65</div> <div>MONO COLOR</div>

Column Light

열주등

Installation Case HDC-148-SV-LB



View



Specification

모델명	HDC-148-SV-LB
소비전력	125W
Material	Aluminum Pipe
Cover	실리콘
SIZE(mm)	840x105xH3900
식별번호	24891447
단가	3,100,000
IP/색온도	<div>IP 65</div> <div>MONO COLOR</div> <div>RGB</div>

Installation Case HDC-150L-YC



View



Specification

모델명	HDC-150L-YC
소비전력	80W
Material	Aluminum Pipe
Cover	실리콘
SIZE(mm)	1200x160xH3900
식별번호	24891437
단가	2,200,000
IP/색온도	<div>IP 65</div> <div>MONO COLOR</div>

Column Light

열주등

Installation Case
HDC-150L-TYC



View



Specification

모델명	HDC-150L-TYC
소비전력	80W
Material	Aluminum Pipe
Cover	실리콘
SIZE(mm)	1100x160xH3900
식별번호	24891438
단가	2,800,000
IP/색온도	<div>IP 65</div> <div>MONO COLOR</div>

Installation Case
HDC-170-TYC



View



Specification

모델명	HDC-170-TYC
소비전력	80W
Material	Aluminum Pipe
Cover	실리콘
SIZE(mm)	1150x140xH3900
식별번호	24891441
단가	2,600,000
IP/색온도	<div>IP 65</div> <div>MONO COLOR</div>

Column Light

열주등

Installation Case
HDC-140-TYC



View



Specification

모델명	HDC-140-TYC
소비전력	100W
Material	Aluminum Pipe
Cover	실리콘
SIZE(mm)	1300x150xH3900
식별번호	24891443
단가	3,000,000
IP/색온도	<div>IP 65</div> <div>MONO COLOR</div>

Installation Case
HDC-148-2COT-2



View



Specification

모델명	HDC-148-2COT-2
소비전력	80W
Material	Aluminum Pipe
Cover	실리콘
SIZE(mm)	1000x185xH3900
식별번호	24891435
단가	2,900,000
IP/색온도	<div>IP 65</div> <div>MONO COLOR</div>

Column Light

열주등

Installation Case

HDC-148-3COT-1B



View



Installation Case

HDC-148-XC-2



View



Specification

모델명	HDC-148-3COT-1B
소비전력	100W
Material	Aluminum Pipe
Cover	실리콘
SIZE(mm)	1100x185xH3900
식별번호	24891444
단가	3,300,000
IP/색온도	<div>IP 65</div> <div>MONO COLOR</div> <div>RGB</div>

Specification

모델명	HDC-148-XC-2
소비전력	120W
Material	Aluminum Pipe
Cover	실리콘
SIZE(mm)	1400x105xH3900
식별번호	24891446
단가	3,320,000
IP/색온도	<div>IP 65</div> <div>MONO COLOR</div>

Column Light

열주등

Installation Case
HDC-148-CB



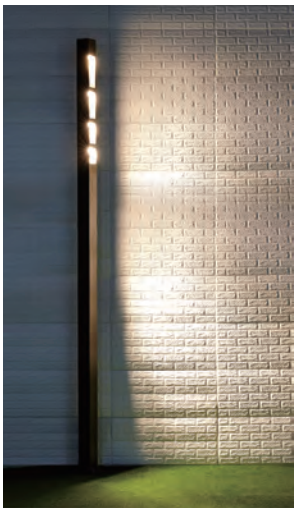
View



Specification

모델명	HDC-148-CB
소비전력	185W
Material	Aluminum Pipe
Cover	실리콘
SIZE(mm)	185x105xH3900
식별번호	24891430
단가	2,500,000
IP/색온도	<div>IP 65</div> <div>MONO COLOR</div>

Installation Case
HDC-140-PPC



View



Specification

모델명	HDC-140-PPC
소비전력	80W
Material	Aluminum Pipe
Cover	실리콘
SIZE(mm)	150x120xH3900
식별번호	24891434
단가	2,900,000
IP/색온도	<div>IP 65</div> <div>MONO COLOR</div>

Column Light

열주등

Installation Case

HDC-149-PPC



View



Specification

모델명	HDC-149-PPC
소비전력	100W
Material	Aluminum
Cover	실리콘
SIZE(mm)	150x120xH3900
식별번호	24891445
단가	3,200,000
IP/색온도	IP 65 MONO COLOR

Installation Case

HDC-150L-MI



View



Specification

모델명	HDC-150L-MI
소비전력	80W
Material	Aluminum
Cover	실리콘
SIZE(mm)	ø160xH3900
식별번호	24891436
단가	3,100,000
IP/색온도	IP 65 MONO COLOR

Column Light

열주등

Installation Case
HDC-150-LDB



View



Specification

모델명	HDC-150-LDB
소비전력	118W
Material	Aluminum
Cover	광학산PC
SIZE(mm)	ø160xH3300
식별번호	24891448
단가	2,100,000
IP/색온도	<div>IP 65</div> <div>MONO COLOR</div>

Installation Case
HDC-133-LBR



View



Specification

모델명	HDC-133-LBR
소비전력	150W
Material	Aluminum
Cover	광학산PC
SIZE(mm)	ø150xH3250
식별번호	24891449
단가	3,400,000
IP/색온도	<div>IP 65</div> <div>MONO COLOR</div>

Flower Light

꽃 조명

Installation Case

HDFLF-650B



View



Specification

모델명	HDFLF-650B
소비전력	0.3W
Material	PMMA
Cover	PMMA
SIZE(mm)	ø123.7xH800
식별번호	24565969
단가	40,000
IP/색온도	<div>IP 65</div> <div>MONO COLOR</div> <div>RGB</div>

Installation Case

HDFLF-800D



View



Specification

모델명	HDFLF-800D
소비전력	0.3W
Material	PMMA
Cover	PMMA
SIZE(mm)	ø169.5xH800
식별번호	24565968
단가	50,000
IP/색온도	<div>IP 65</div> <div>MONO COLOR</div> <div>RGB</div>

Flower Light

꽃 조명

Installation Case

HDFLF-800B



View



Specification

모델명	HDFLF-800B
소비전력	1W
Material	PMMA
Cover	PMMA
SIZE(mm)	ø94x H800
식별번호	24565966
단가	60,000
IP/색온도	<div>IP 65</div> <div>MONO COLOR</div> <div>RGB</div>

Installation Case

HDFLF-800C



View



Specification

모델명	HDFLF-800C
소비전력	1W
Material	PMMA
Cover	PMMA
SIZE(mm)	ø118.2xH800
식별번호	24565967
단가	60,000
IP/색온도	<div>IP 65</div> <div>MONO COLOR</div> <div>RGB</div>

Flower Light

꽃 조명

Installation Case

HDFLF-650



View



Specification

모델명	HDFLF-650
소비전력	1W
Material	FRP
Cover	PMMA
SIZE(mm)	ø70xH650
식별번호	24565914
단가	71,000
IP/색온도	<div>IP 65</div> <div>MONO COLOR</div> <div>RGB</div>

Installation Case

HD-GRP0038A



View



Specification

모델명	HD-GRP0038A
소비전력	1W
Material	Aluminum Die-casting
Cover	Acrylic
SIZE(mm)	ø38x1000
식별번호	24891408
단가	165,000
IP/색온도	<div>IP 65</div> <div>MONO COLOR</div> <div>RGB</div>

Shape Light

형상 조명

Installation Case
HDBLJ-120



View



Specification

모델명	HDBLJ-120
소비전력	20W
Material	Polycarbonate
Cover	Polycarbonate
SIZE(mm)	400x400xH120
식별번호	24565942
단가	397,000
IP/색온도	<div>IP 65</div> <div>MONO COLOR</div> <div>RGB</div>

Installation Case
HDBLJ-400



View



Specification

모델명	HDBLJ-400
소비전력	20W
Material	Polycarbonate
Cover	Polycarbonate
SIZE(mm)	ø300xH400
식별번호	24565943
단가	535,000
IP/색온도	<div>IP 65</div> <div>MONO COLOR</div> <div>RGB</div>

Shape Light

형상 조명

Installation Case

HDBL-400A



View



Specification

모델명	HDBL-400A
소비전력	20W
Material	Polycarbonate
Cover	Polycarbonate
SIZE(mm)	400x400xH420
식별번호	24891422
단가	788,000
IP/색온도	<div>IP 65</div> <div>MONO COLOR</div> <div>RGB</div>

Installation Case

HDBLJ-1100A



View



Specification

모델명	HDBLJ-1100A
소비전력	50W
Material	Polycarbonate
Cover	Polycarbonate
SIZE(mm)	650x150xH1100
식별번호	24891423
단가	700,000
IP/색온도	<div>IP 65</div> <div>MONO COLOR</div> <div>RGB</div>

Shape Light

형상 조명

Installation Case

HDBLJ-200A



View



Specification

모델명	HDBLJ-200A
소비전력	10W
Material	Polycarbonate
Cover	Polycarbonate
SIZE(mm)	190x230xH500
식별번호	24891427
단가	230,000
IP/색온도	<div>IP 65</div> <div>MONO COLOR</div> <div>RGB</div>

Installation Case

HDBLJ-280A



View



Specification

모델명	HDBLJ-280A
소비전력	27W
Material	PMMA
Cover	-
SIZE(mm)	280x380xH400
식별번호	24891424
단가	680,000
IP/색온도	<div>IP 65</div> <div>MONO COLOR</div> <div>RGB</div>

Shape Light

형상 조명

Installation Case

HDBLJ-530A



View

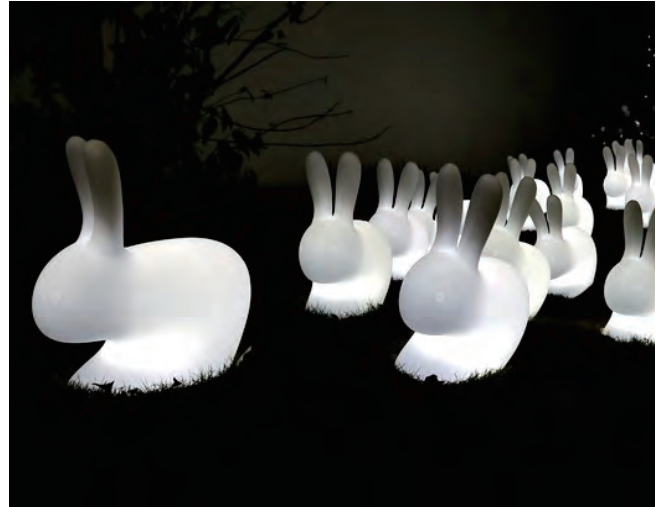


Specification

모델명	HDBLJ-530A
소비전력	10W
Material	Polycarbonate
Cover	Polycarbonate
SIZE(mm)	450xH530
식별번호	24891429
단가	590,000
IP/색온도	<div>IP 65</div> <div>MONO COLOR</div> <div>RGB</div>

Installation Case

HDBLJ-780



View



Specification

모델명	HDBLJ-780
소비전력	20W
Material	Polycarbonate
Cover	Polycarbonate
SIZE(mm)	680xH780
식별번호	24565939
단가	911,000
IP/색온도	<div>IP 65</div> <div>MONO COLOR</div> <div>RGB</div>

Shape Light

형상 조명

Installation Case

HDBLJ-800N / HDBLJ-1200 / HDBLJ-1500



View



Specification

모델명	HDBLJ-800N	HDBLJ-1200	HDBLJ-1500
소비전력	3W	5W	10W
Material	Polycarbonate	Polycarbonate	Polycarbonate
Cover	-	-	-
SIZE(mm)	H800	H1200	H1500
식별번호	24891426	24565955	24565954
단가	430,000	630,000	810,000
IP/색온도	<div>IP 65</div> <div>MONO COLOR</div> <div>RGB</div>	<div>IP 65</div> <div>MONO COLOR</div> <div>RGB</div>	<div>IP 65</div> <div>MONO COLOR</div> <div>RGB</div>

Shape Light

형상 조명

Installation Case




HDBLJ-500A / HDBLJ-600A / HDBLJ-800A



View



Specification

모델명	HDBLJ-500A	HDBLJ-600A	HDBLJ-800A
소비전력	40W	50W	70W
Material	SUS	SUS	SUS
Cover	Polycarbonate	Polycarbonate	Polycarbonate
SIZE(mm)	ø500xH3000	ø600xH3000	ø800xH3000
식별번호	24902766	24902767	24902768
단가	3,380,000	4,180,000	5,100,000
IP/색온도	<div>IP 65</div> <div>MONO COLOR</div> <div>RGB</div>	<div>IP 65</div> <div>MONO COLOR</div> <div>RGB</div>	<div>IP 65</div> <div>MONO COLOR</div> <div>RGB</div>

Shape Light

형상 조명

Installation Case

HDBL-600



View



Specification

모델명	HDBL-600
소비전력	50W
Material	Steel
Cover	-
SIZE(mm)	ø600
식별번호	24565953
단가	2,610,000
IP/색온도	<div>IP 65</div> <div>MONO COLOR</div> <div>RGB</div>

Installation Case

HDBLJ-1800A



View



Specification

모델명	HDBLJ-1800A
소비전력	50W
Material	Polycarbonate
Cover	Polycarbonate
SIZE(mm)	ø1800
식별번호	24896798
단가	5,880,000
IP/색온도	<div>IP 65</div> <div>MONO COLOR</div> <div>RGB</div>

Shape Light

형상 조명

Installation Case

HDBLP-2560A



View

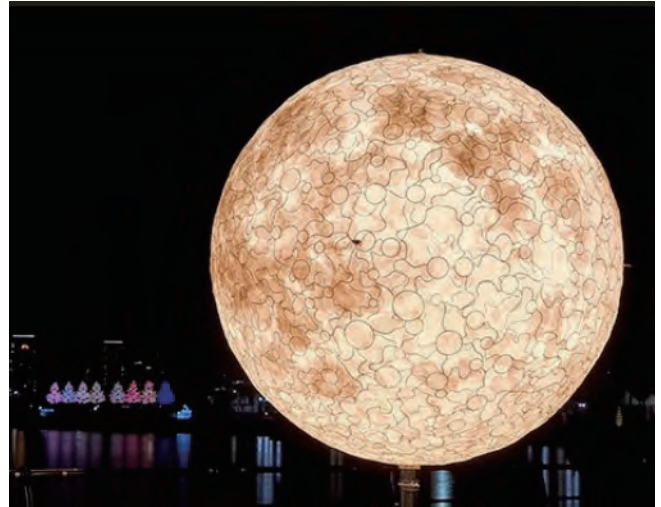


Specification

모델명	HDBLP-2560A
소비전력	180W
Material	Steel+Polycarbonate
Cover	Polycarbonate
SIZE(mm)	H2560
식별번호	24891425
단가	13,010,000
IP/색온도	<div>IP 65</div> <div>MONO COLOR</div> <div>RGB</div>

Installation Case

HDBLB-2300A



View



Specification

모델명	HDBLB-2300A
소비전력	48W
Material	Polycarbonate
Cover	-
SIZE(mm)	ø2300
식별번호	24891428
단가	14,510,000
IP/색온도	<div>IP 65</div> <div>MONO COLOR</div> <div>RGB</div>

Shape Light

형상 조명

Installation Case





HD-2S49 / HD-2S50 / HD-2S51 / HD-2S54



View



Specification

모델명	HD-2S49	HD-2S50	HD-2S51	HD-2S54
소비전력	5W	5W	8W	10W
Material	Polyethylene	Polyethylene	Polyethylene	Polyethylene
Cover	-	-	-	-
SIZE(mm)	ø300	ø400	ø500	ø800
식별번호	24891531	24891532	24891533	24891534
단가	250,000	360,000	480,000	1,100,000
IP/색온도	<div>IP 65</div> <div>MONO COLOR</div> <div></div>	<div>IP 65</div> <div>MONO COLOR</div> <div></div>	<div>IP 65</div> <div>MONO COLOR</div> <div></div>	<div>IP 65</div> <div>MONO COLOR</div> <div></div>

Shape Light

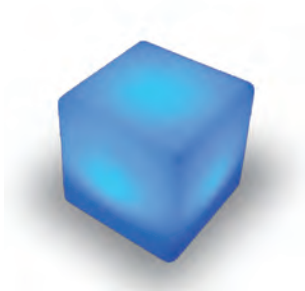
형상 조명

Installation Case

HD-2S56



View



Specification

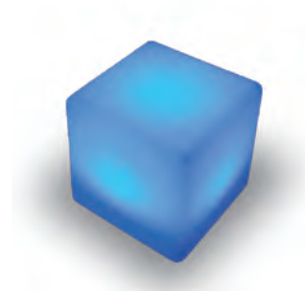
모델명	HD-2S56
소비전력	5W
Material	Polyethylene
Cover	-
SIZE(mm)	400xH400
식별번호	24891535
단가	480,000
IP/색온도	<div>IP 65</div> <div>MONO COLOR</div> <div>RGB</div>

Installation Case

HD-2S58



View



Specification

모델명	HD-2S58
소비전력	8W
Material	Polyethylene
Cover	-
SIZE(mm)	600xH600
식별번호	24891536
단가	980,000
IP/색온도	<div>IP 65</div> <div>MONO COLOR</div> <div>RGB</div>

Shape Light

형상 조명

Installation Case




HD-2S89 / HD-2S90 / HD-2S91



View



Specification

모델명	HD-2S89	HD-2S90	HD-2S91
소비전력	5W	5W	5W
Material	Polyethylene	Polyethylene	Polyethylene
Cover	-	-	-
SIZE(mm)	260x140xH170	450x250xH530	670x390xH790
식별번호	24891542	24891543	24891544
단가	240,000	360,000	720,000
IP/색온도	<div>IP 65</div> <div>MONO COLOR</div> <div></div>	<div>IP 65</div> <div>MONO COLOR</div> <div></div>	<div>IP 65</div> <div>MONO COLOR</div> <div></div>

Shape Light

형상 조명

Installation Case

HD-2S92



View



Specification

모델명	HD-2S92		
소비전력	24W		
Material	FRP		
Cover	-		
SIZE(mm)	280x660xH740		
식별번호	24891545		
단가	3,000,000		
IP/색온도	<table><tr><td>IP 65</td><td>MONO COLOR</td></tr></table>	IP 65	MONO COLOR
IP 65	MONO COLOR		

Installation Case

HD-2S93



View



Specification

모델명	HD-2S93		
소비전력	24W		
Material	FRP		
Cover	-		
SIZE(mm)	300x450xH800		
식별번호	24891546		
단가	3,000,000		
IP/색온도	<table><tr><td>IP 65</td><td>MONO COLOR</td></tr></table>	IP 65	MONO COLOR
IP 65	MONO COLOR		

Shape Light

형상 조명

Installation Case

HD-S27-1



View



Specification

모델명	HD-S27-1
소비전력	56W
Material	Steel
Cover	Polycarbonate
SIZE(mm)	ø600xH2500
식별번호	24891523
단가	3,900,000
IP/색온도	<div>IP 65</div> <div>MONO COLOR</div> <div>RGB</div>

Installation Case

HD-S27-2



View



Specification

모델명	HD-S27-2
소비전력	100W
Material	Steel
Cover	Polycarbonate
SIZE(mm)	ø800xH3000
식별번호	24891524
단가	4,200,000
IP/색온도	<div>IP 65</div> <div>MONO COLOR</div> <div>RGB</div>

Shape Light

형상 조명

Installation Case

HD-2S01



View



Specification

모델명	HD-2S01		
소비전력	60W		
Material	Steel+GL		
Cover	Polycarbonate		
SIZE(mm)	1280x150H1200		
식별번호	24891525		
단가	3,200,000		
IP/색온도	<table><tr><td>IP 65</td><td>MONO COLOR</td></tr></table>	IP 65	MONO COLOR
IP 65	MONO COLOR		

Installation Case

HD-2S03



View



Specification

모델명	HD-2S03		
소비전력	60W		
Material	Steel+GL		
Cover	Polycarbonate		
SIZE(mm)	1252x150H1200		
식별번호	24891526		
단가	3,200,000		
IP/색온도	<table><tr><td>IP 65</td><td>MONO COLOR</td></tr></table>	IP 65	MONO COLOR
IP 65	MONO COLOR		

Shape Light

형상 조명

Installation Case

HD-2S71 / HD-2S72 / HD-2S73



View



Specification

모델명	HD-2S71	HD-2S72	HD-2S73
소비전력	100W	100W	100W
Material	Steel+GL	Steel+GL	Steel+GL
Cover	Polycarbonate	Polycarbonate	Polycarbonate
SIZE(mm)	1030x300xH1170	1030x300xH1170	1030x300xH1170
식별번호	24891537	24891538	24891539
단가	3,000,000	3,000,000	3,200,000
IP/색온도	IP 65 MONO COLOR	IP 65 MONO COLOR	IP 65 MONO COLOR

Shape Light

형상 조명

Installation Case

HD-2S85



View



Specification

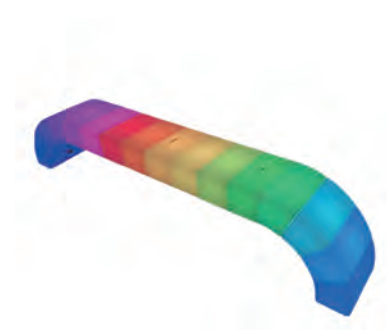
모델명	HD-2S85
소비전력	100W
Material	Steel+GL
Cover	Polycarbonate
SIZE(mm)	1200x350xH600
식별번호	24891540
단가	3,000,000
IP/색온도	<div>IP 65</div> <div>MONO COLOR</div>

Installation Case

HD-2S87



View



Specification

모델명	HD-2S87
소비전력	36W
Material	Polyethylene
Cover	-
SIZE(mm)	2280x350xH450
식별번호	24891541
단가	10,000,000
IP/색온도	<div>IP 65</div> <div>MONO COLOR</div> <div>RGB</div>

Shape Light

형상 조명

Installation Case

HD-T07



Installation Case

HD-T08



View



Specification

모델명	HD-T07
소비전력	295W
Material	FRP
Cover	FRP
SIZE(mm)	3500x3500xH3900
식별번호	24891527
단가	18,000,000
IP/색온도	<div>IP 65</div> <div>MONO COLOR</div>



Specification

모델명	HD-T08
소비전력	135W
Material	FRP
Cover	FRP
SIZE(mm)	3000x3000xH3800
식별번호	24891528
단가	10,000,000
IP/색온도	<div>IP 65</div> <div>MONO COLOR</div>

Shape Light

형상 조명

Installation Case

HD-T09



Installation Case

HD-T11



View



Specification

모델명	HD-T09
소비전력	125W
Material	FRP
Cover	FRP
SIZE(mm)	2500x2500xH2800
식별번호	24891529
단가	8,500,000
IP/색온도	<div>IP 65</div> <div>MONO COLOR</div>

Specification

모델명	HD-T11
소비전력	45W
Material	FRP
Cover	FRP
SIZE(mm)	1600x1600xH1800
식별번호	24891530
단가	4,200,000
IP/색온도	<div>IP 65</div> <div>MONO COLOR</div>

**Given the continuous evolution of LED technology,
the technical characteristics of the lighting fixtures may vary
with respect to those given in this publication.**

**The technical reference documentation is available in the download
section for each product on the HYUNDAENG website:**

www.hyundaeng.co.kr

LED 기술의 지속적인 발전으로 인한 조명 설비의 기술적 특성은
본 카탈로그에 제시된 것과 달라질 수 있습니다.

HYUNDAENG 웹 사이트의 각 제품 다운로드 섹션에서
기술 참조 문서를 사용할 수 있습니다.

www.hyundaeng.co.kr

HYUNDAENG, 2023, VOL.02

세종본사

세종특별자치시 집현중앙4로 16

16, Jiphyeonjungang 4-ro, Sejong-si, 30141, Republic of Korea

TEL: +82-44-272-8899 FAX: +82-44-272-9669

수도권사무소

인천광역시 남동구 아암대로1223 성강지식산업센터 610호

610, Seonggang Knowledge Industry Center, 1223, Aam-daero, Namdong-gu, Incheon, 21689, Republic of Korea

TEL: +82-32-815-4866 FAX: +82-32-815-4864

